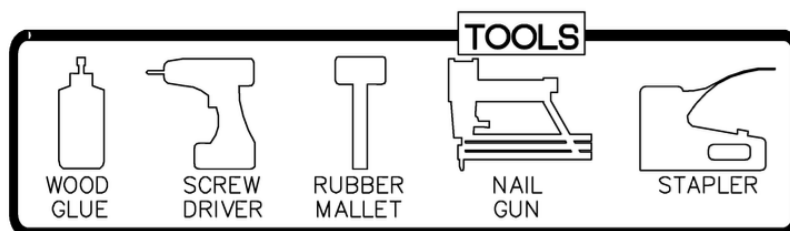
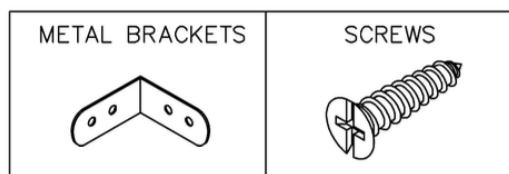
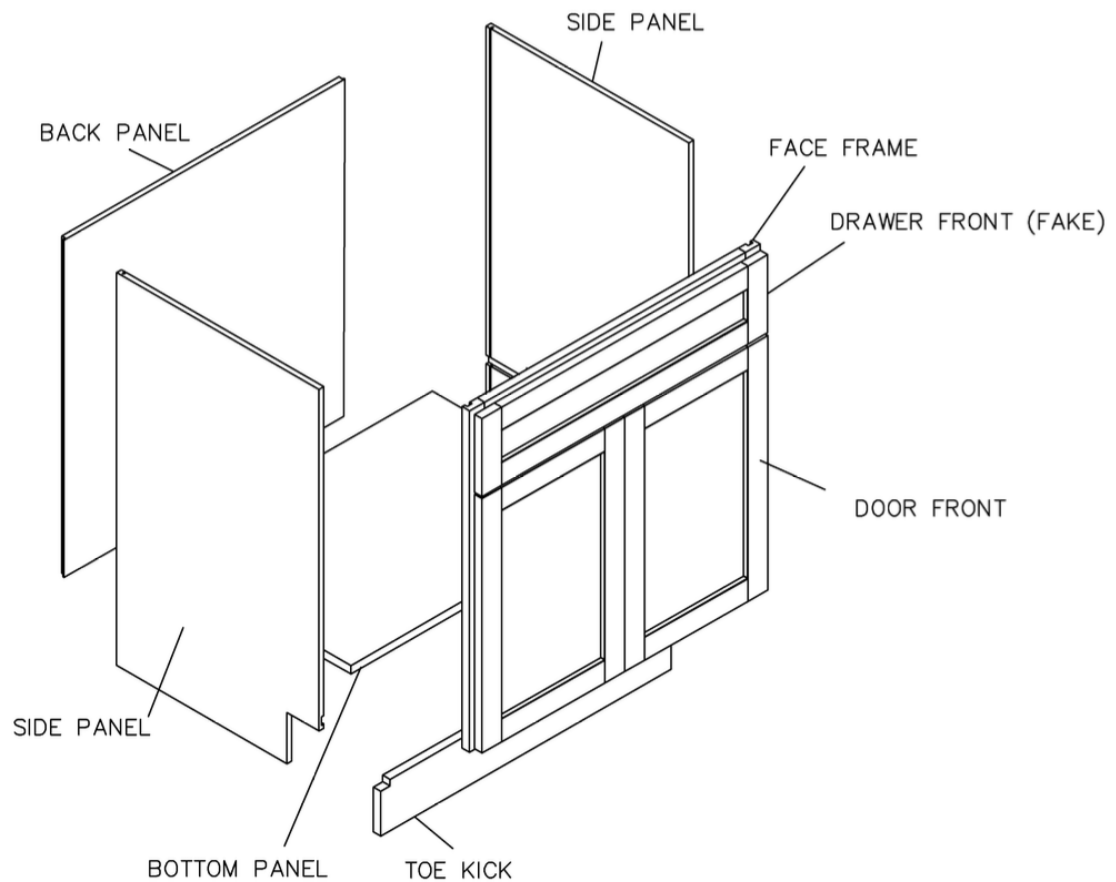


Assembly Book.



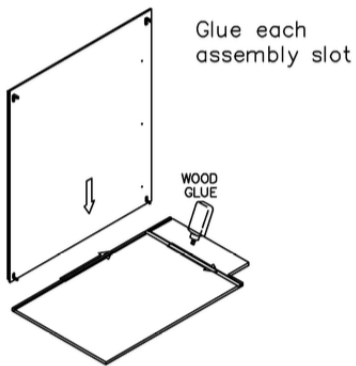
Assembly Instructions / Sink Base Cabinet



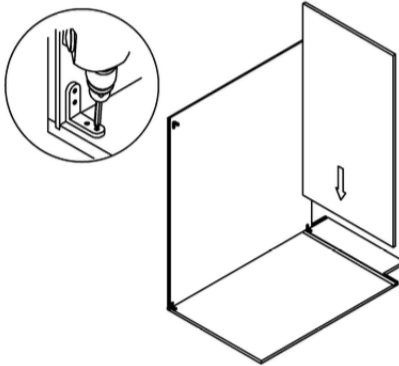
This instruction applies to the following items:
SB30 (Single false drawer)
SB36 (Double false drawers)

Assembly Instructions / Sink Base Cabinet

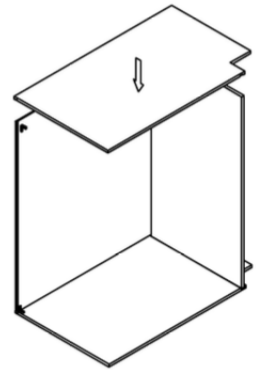
STEP 1



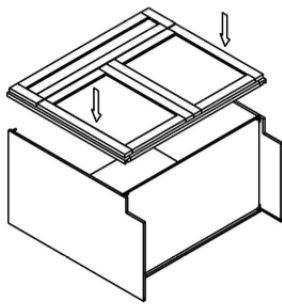
STEP 2



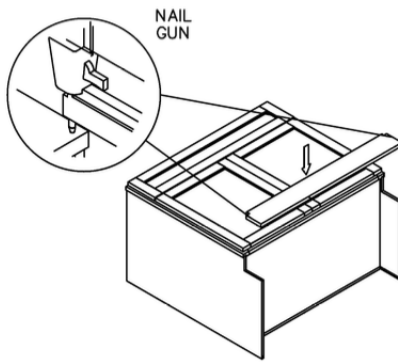
STEP 3



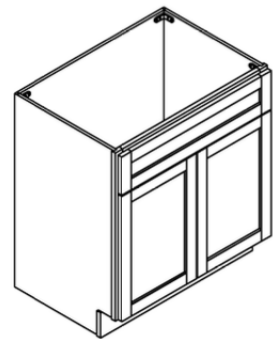
STEP 4



STEP 5

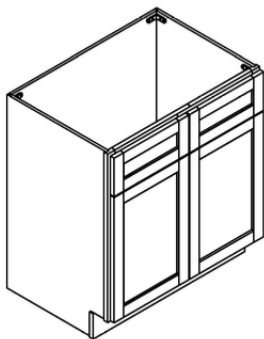


STEP 6



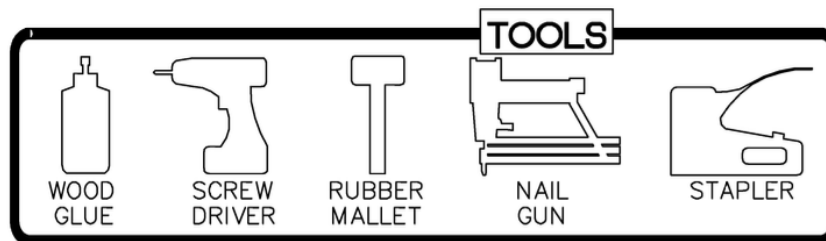
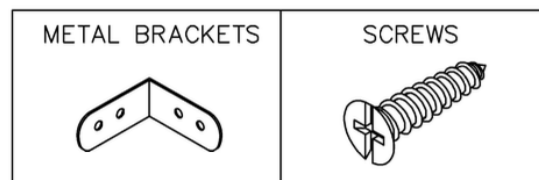
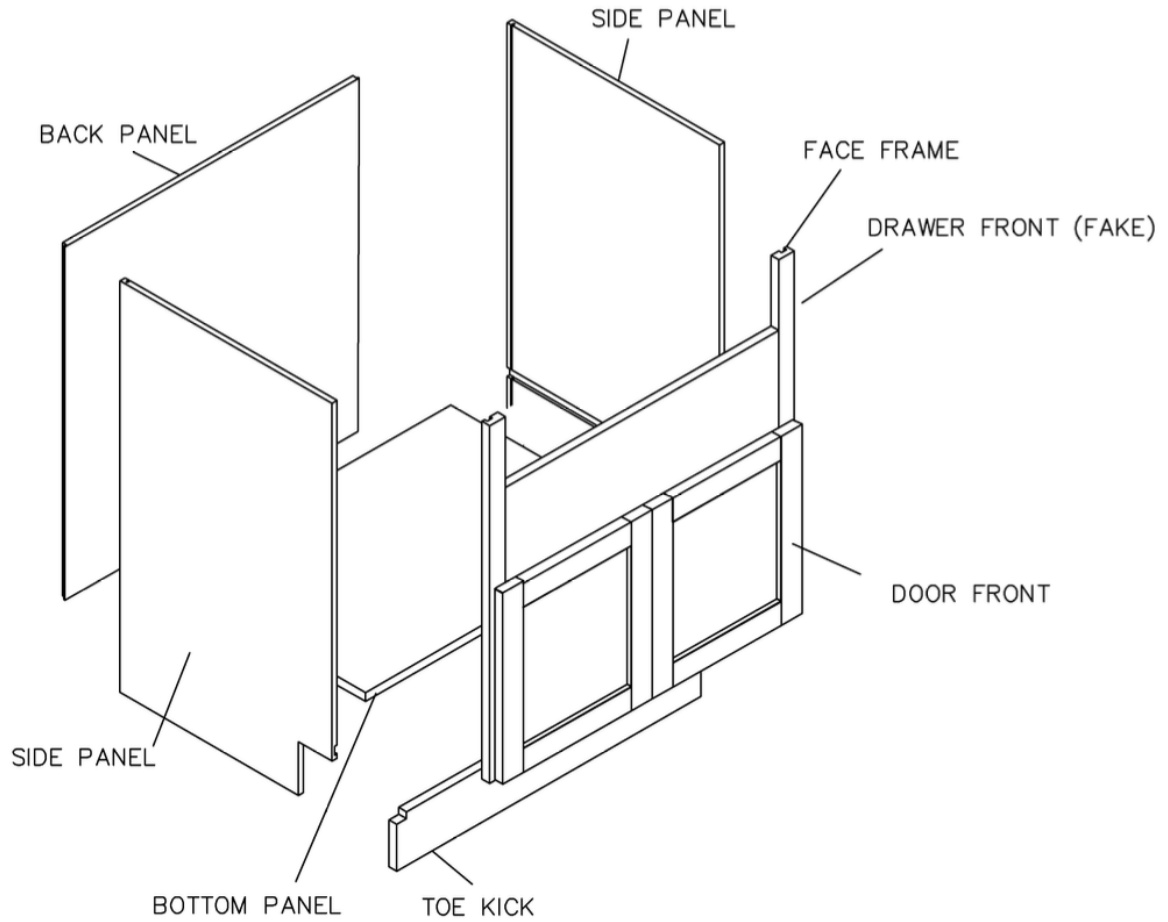
(Single false drawer)

STEP 7



(Double false drawers)

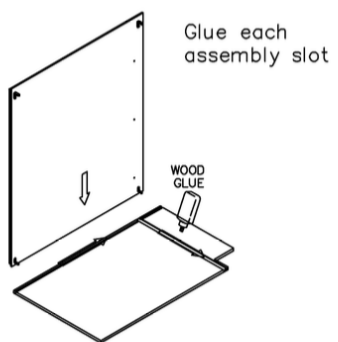
Assembly Instructions / Farm Sink Base Cabinet



This instruction applies to the following items:
FSB36

Assembly Instructions / Farm Sink Base Cabinet

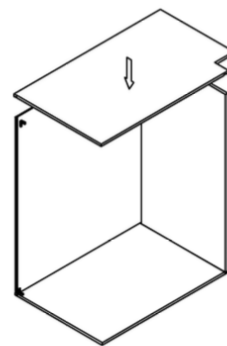
STEP 1



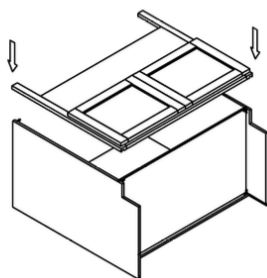
STEP 2



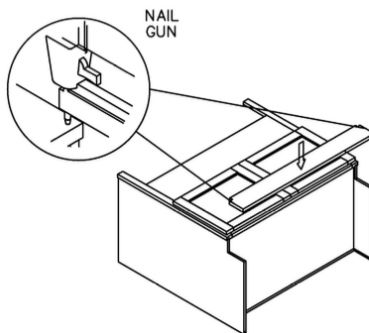
STEP 3



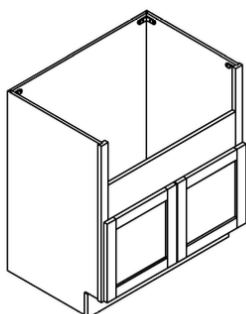
STEP 4



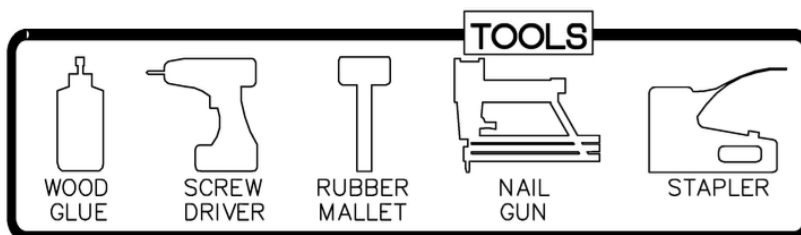
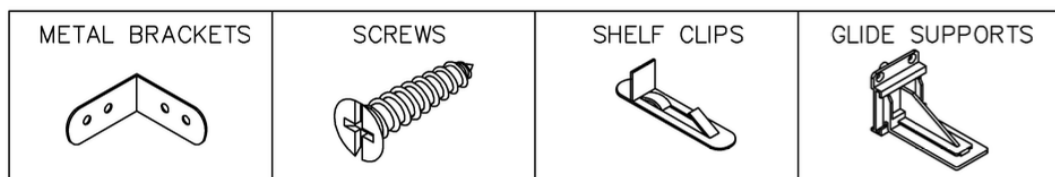
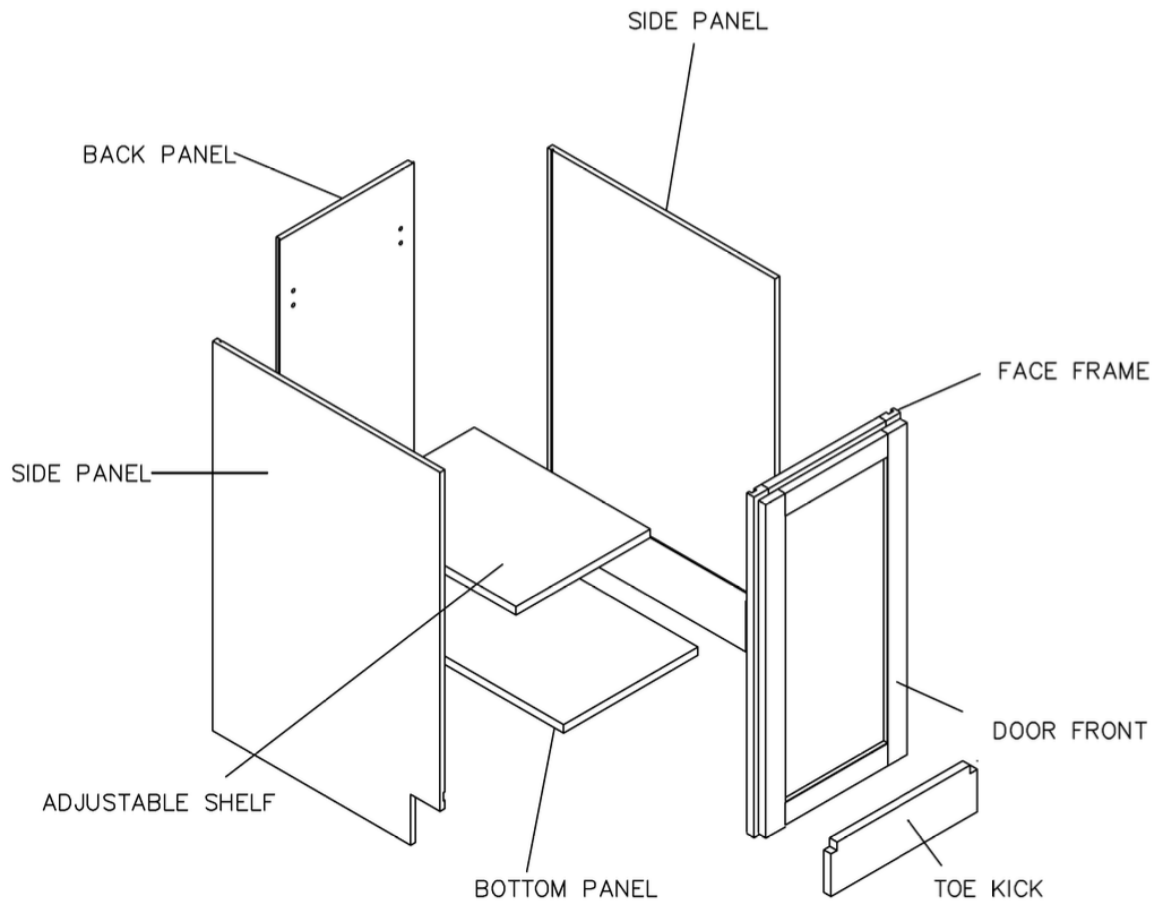
STEP 5



STEP 6



Assembly Instructions / Full Door Base Cabinet

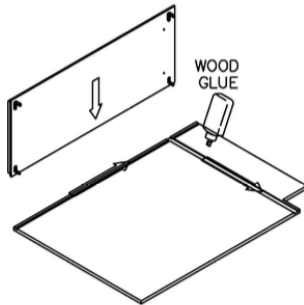


This instruction applies to the following items:
FDB18-FDB36

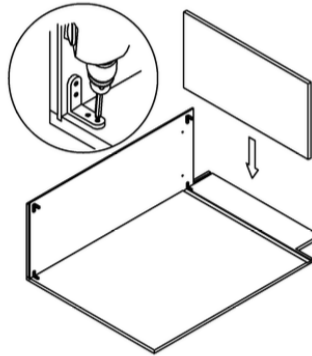
Assembly Instructions / Full Door Base Cabinet

STEP 1

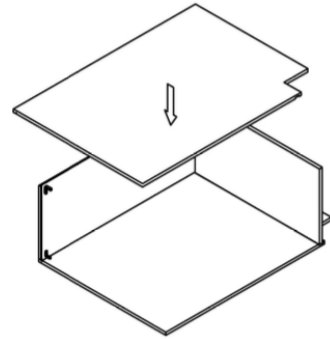
Glue each assembly slot



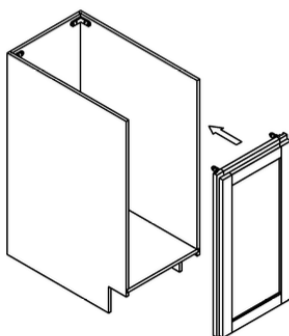
STEP 2



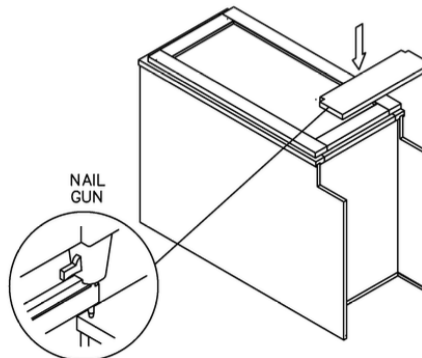
STEP 3



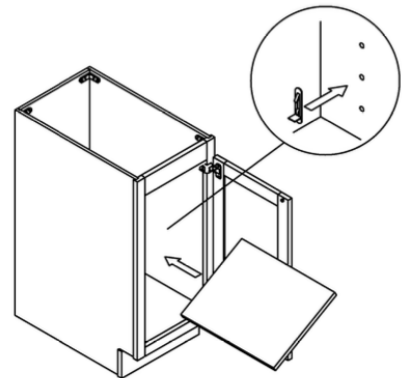
STEP 4



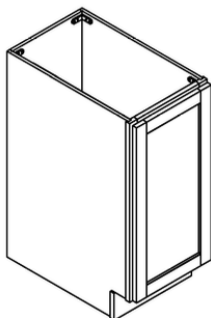
STEP 5



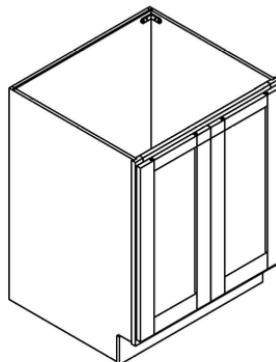
STEP 6



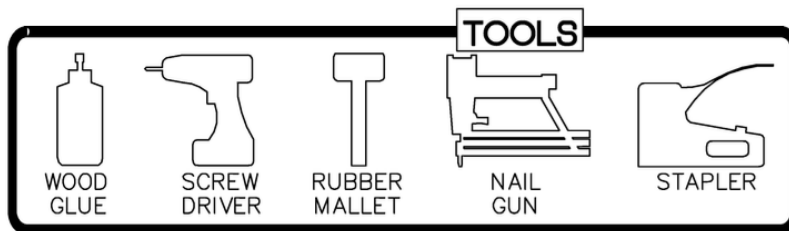
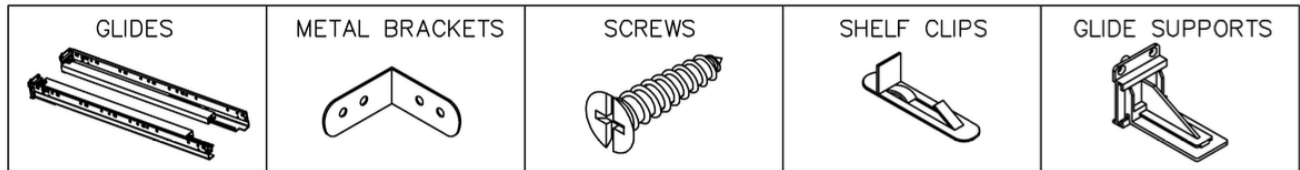
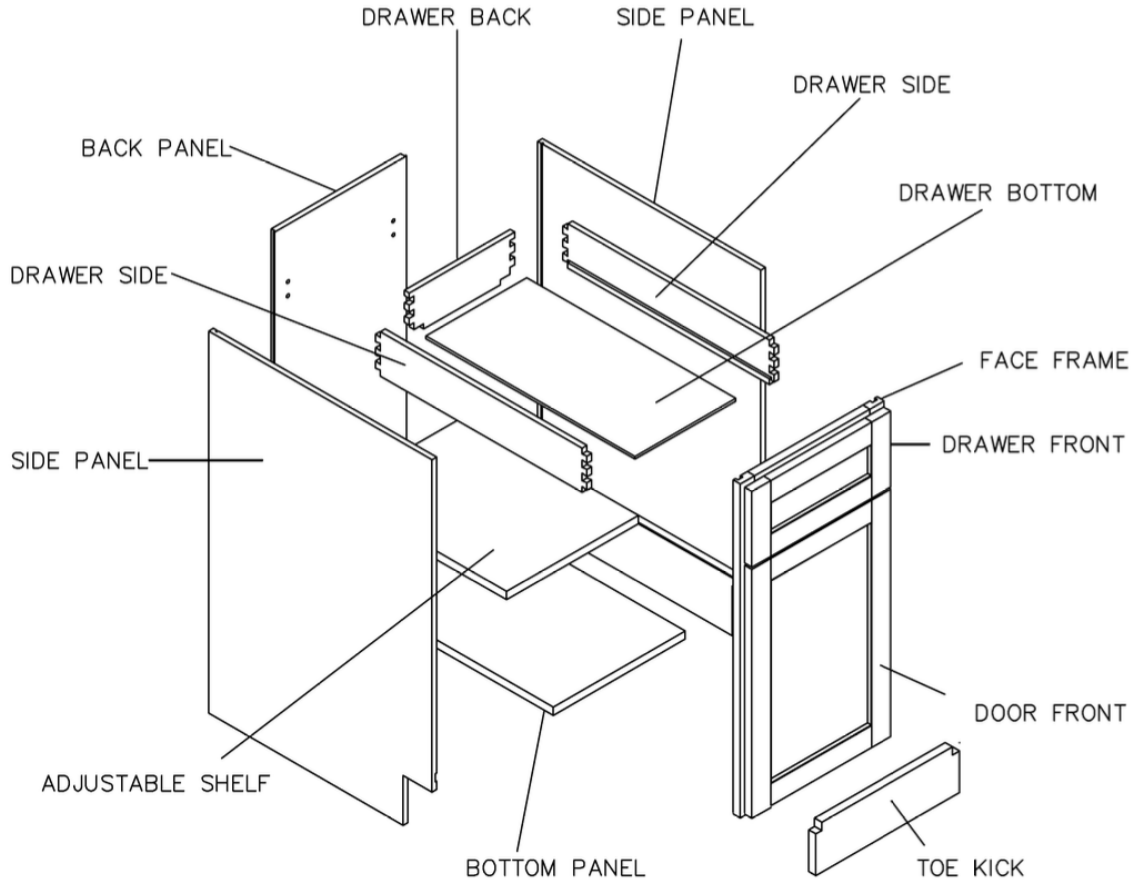
STEP 7



STEP 8



Assembly Instructions / Base Cabinet

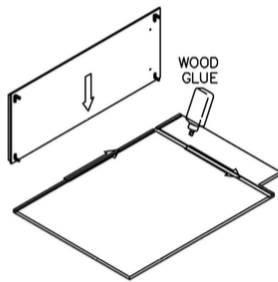


This instruction applies to the following items:
B09, B12, B15, B18, B21, B24,
B27, B30, B33, B36, B39, B42

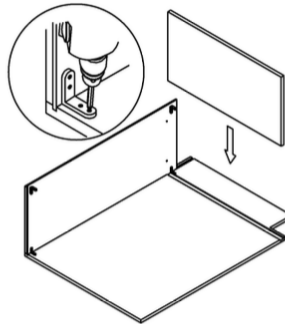
Assembly Instructions / Base Cabinet

STEP 1

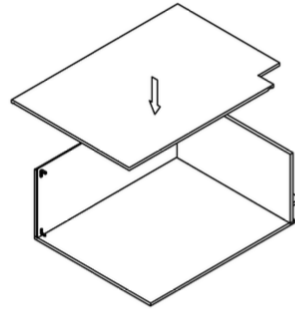
Glue each assembly slot



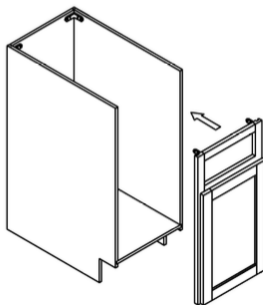
STEP 2



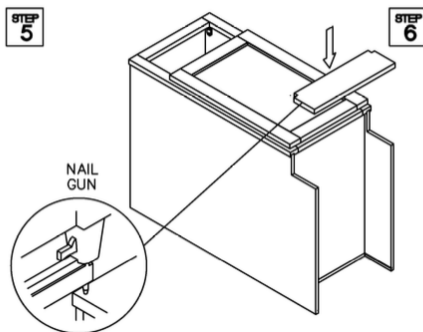
STEP 3



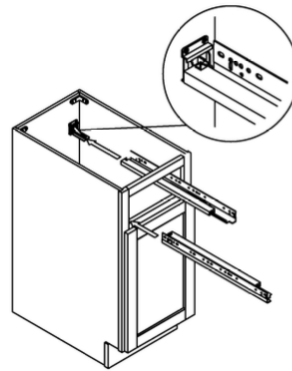
STEP 4



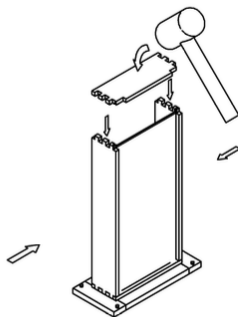
STEP 5



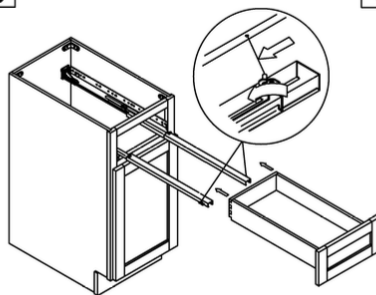
STEP 6



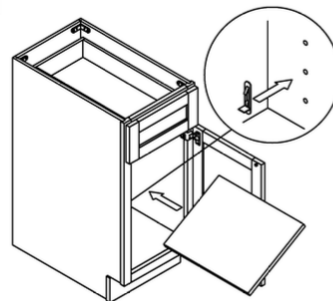
STEP 7



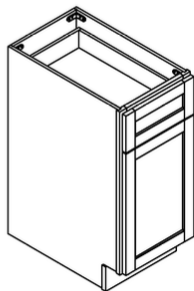
STEP 8



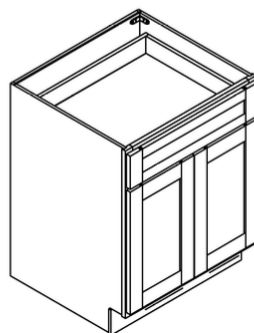
STEP 9



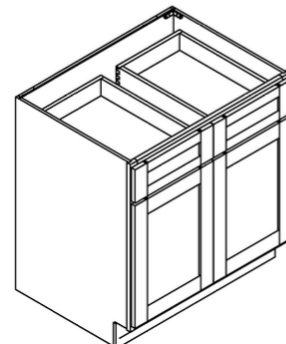
STEP 10



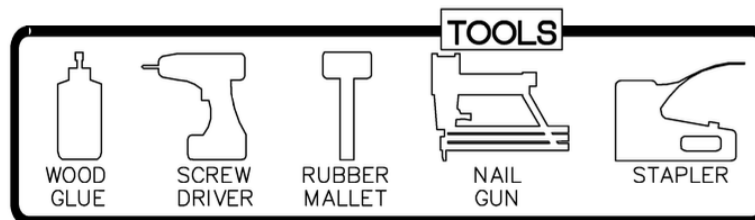
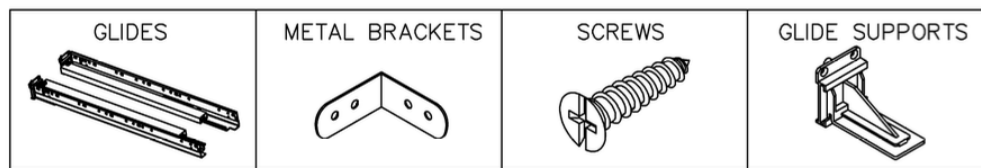
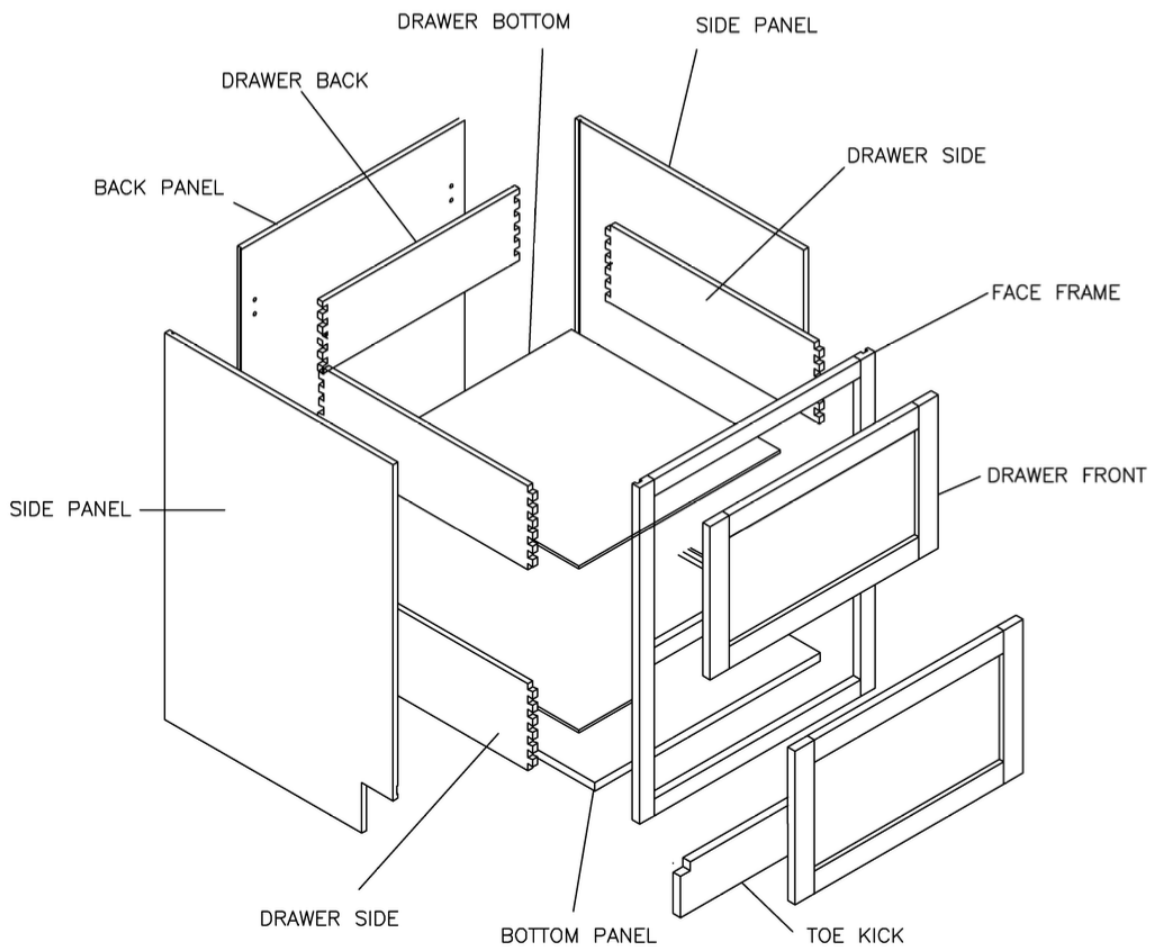
STEP 11



STEP 12



Assembly Instructions / Drawer Base Cabinet (2 Drawers)

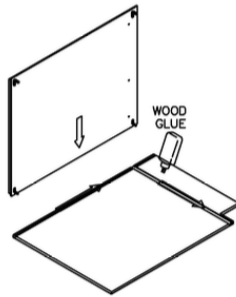


This instruction applies to the following items:
2DB30, 2DB33, 2DB36

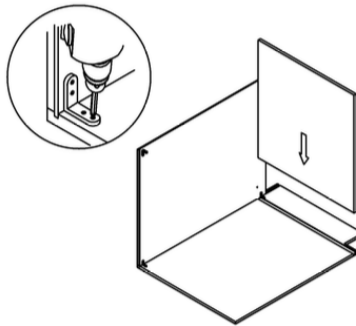
Assembly Instructions / Drawer Base Cabinet (2 Drawers)

STEP 1

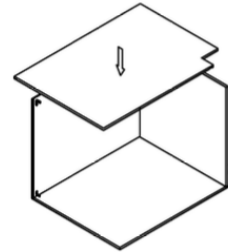
Glue each assembly slot



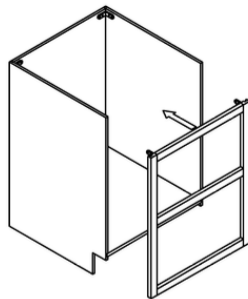
STEP 2



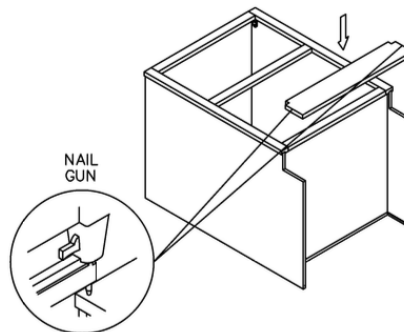
STEP 3



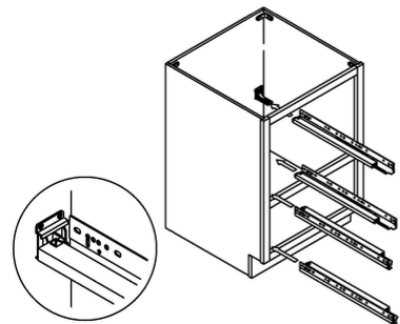
STEP 4



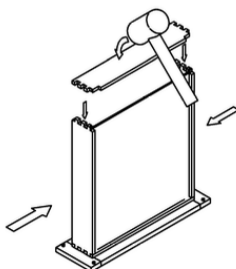
STEP 5



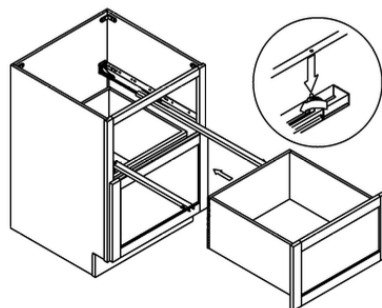
STEP 6



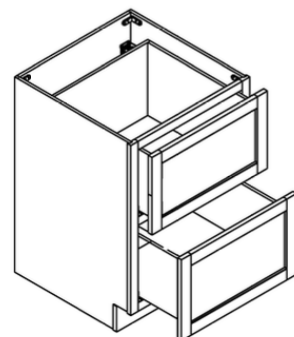
STEP 7



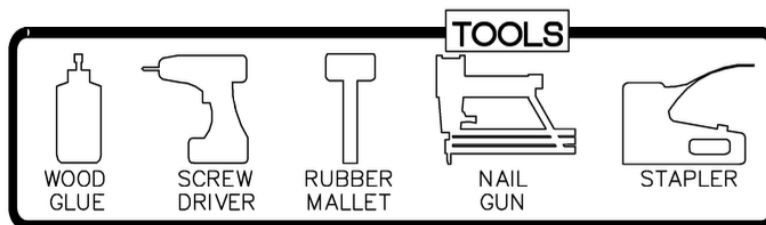
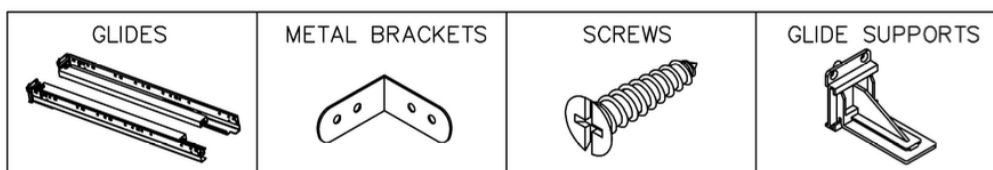
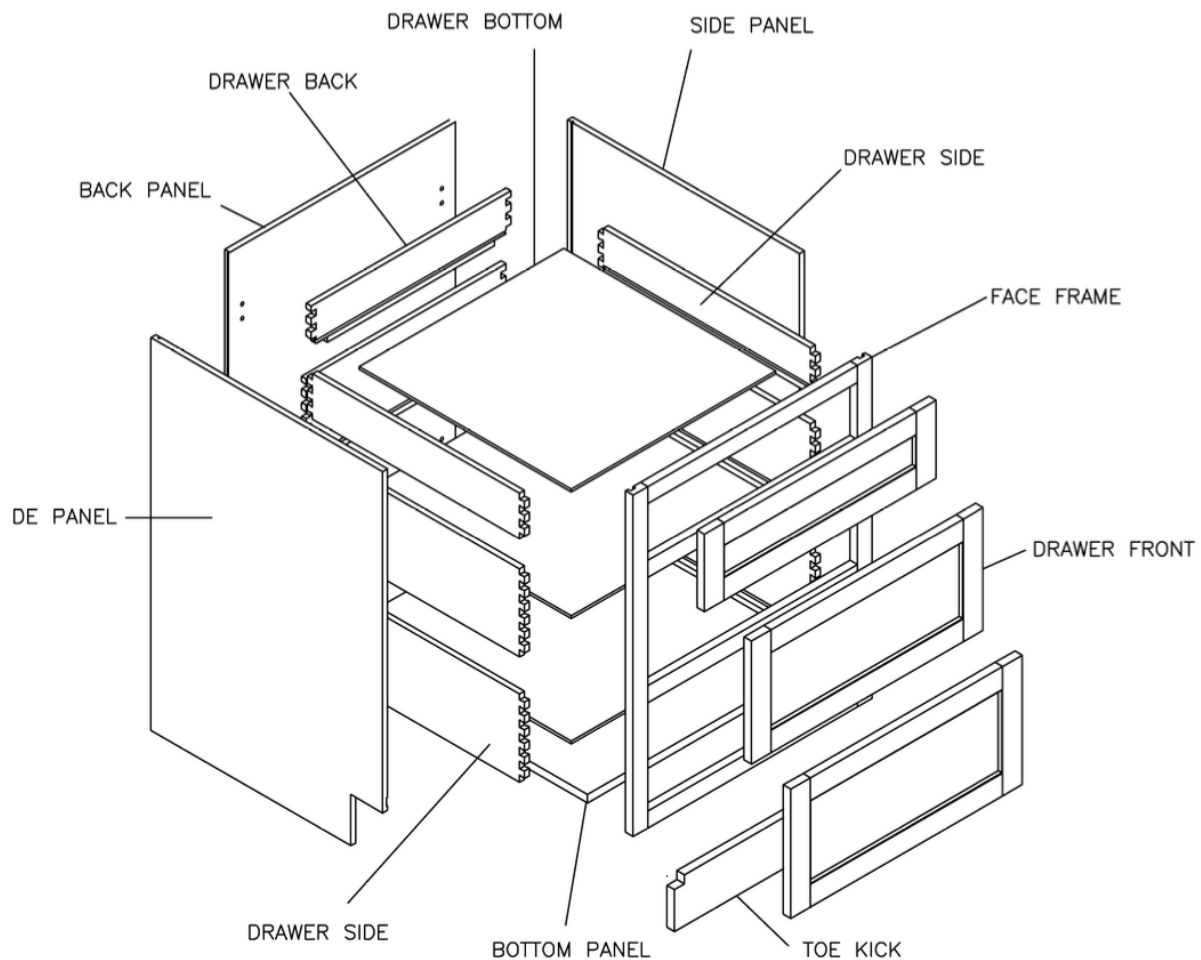
STEP 8



STEP 9



Assembly Instructions / Drawer Base Cabinet (3 Drawers)

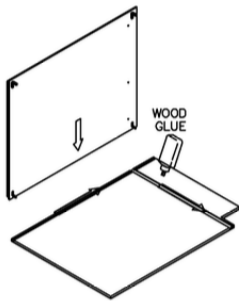


This instruction applies to the following items:
DB12, DB15, DB18, DB21
DB24, DB27, DB30, DB33, DB36

Assembly Instructions / Drawer Base Cabinet (3 Drawers)

STEP 1

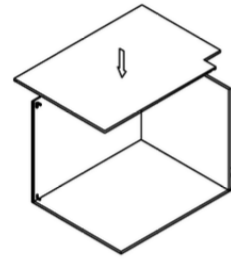
Glue each assembly slot



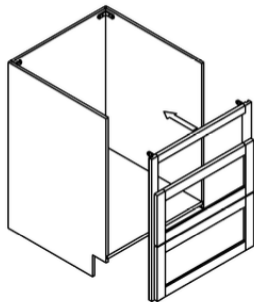
STEP 2



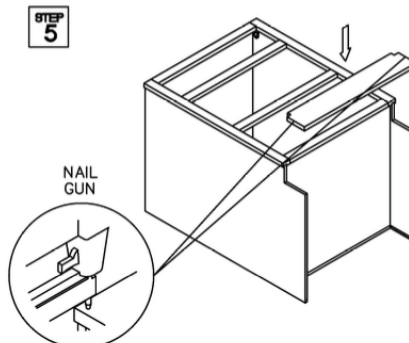
STEP 3



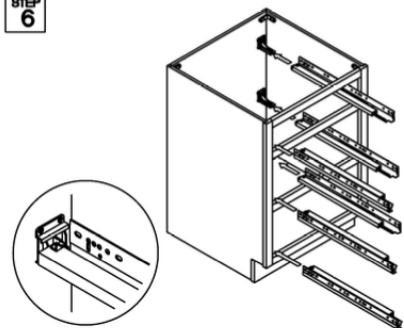
STEP 4



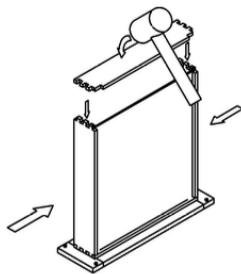
STEP 5



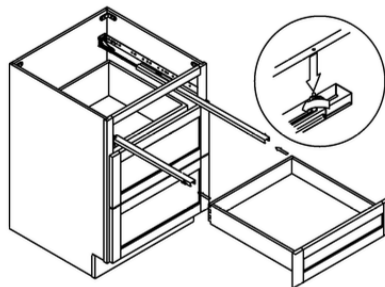
STEP 6



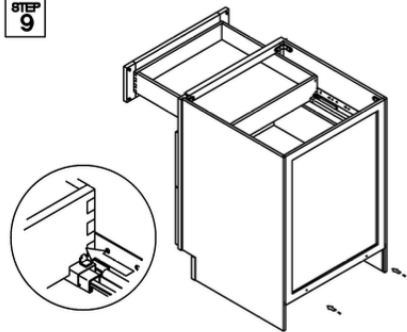
STEP 7



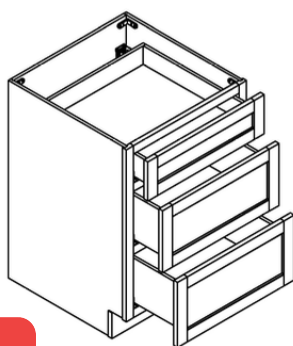
STEP 8



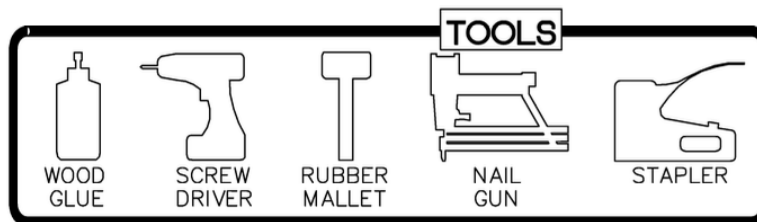
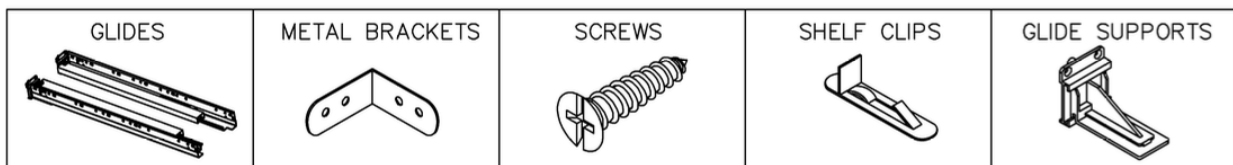
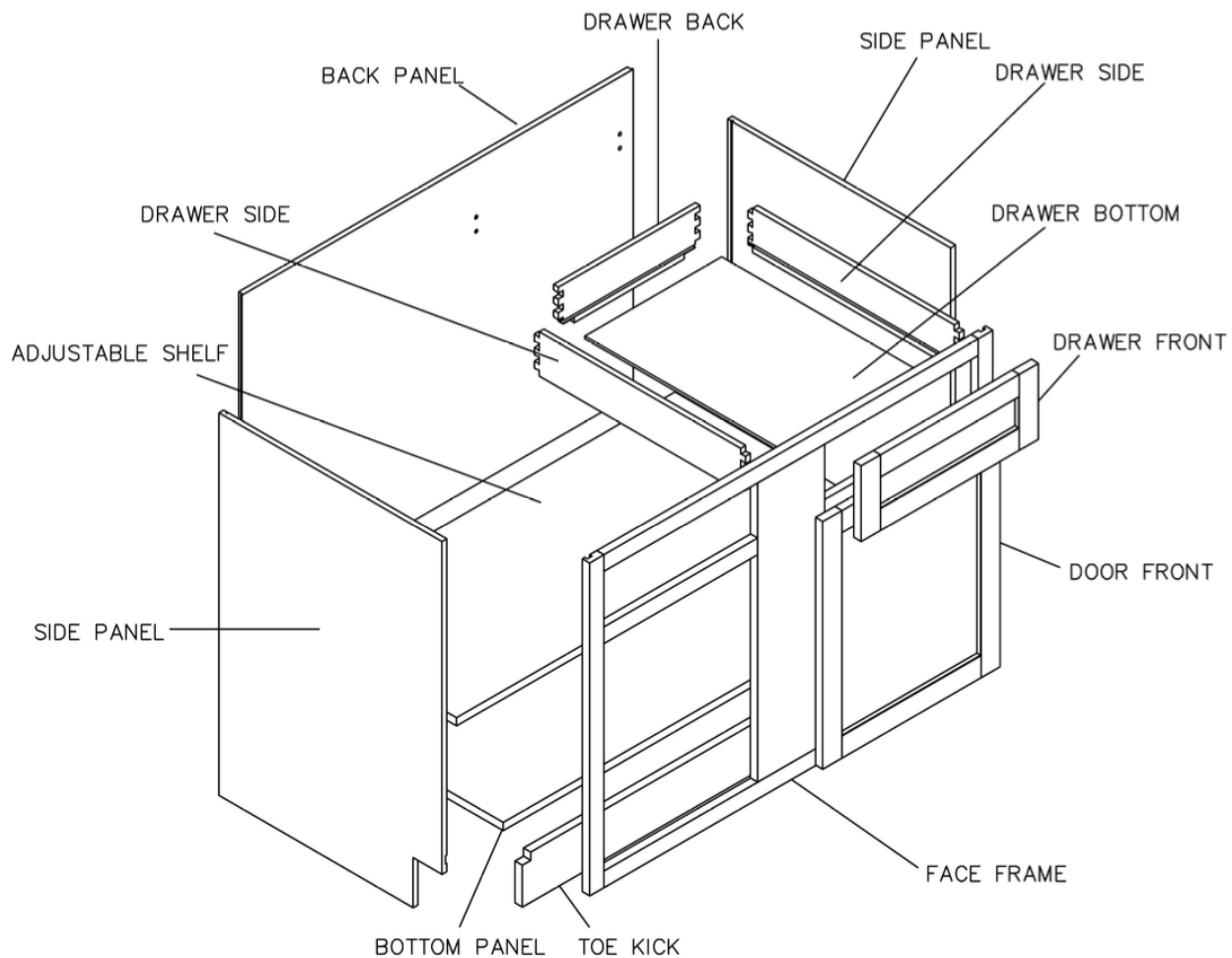
STEP 9



STEP 10



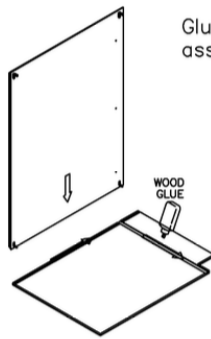
Assembly Instructions / Blind Base Corner Cabinet



This instruction applies to the following items:
BBC33-9

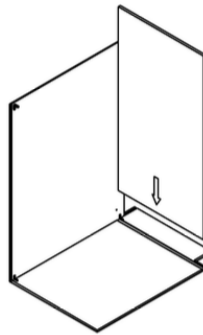
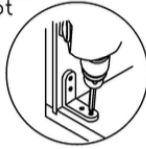
Assembly Instructions / Blind Base Corner Cabinet

STEP 1

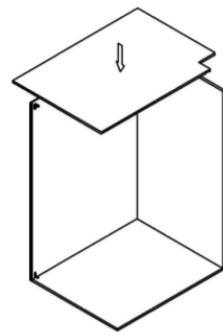


Glue each assembly slot

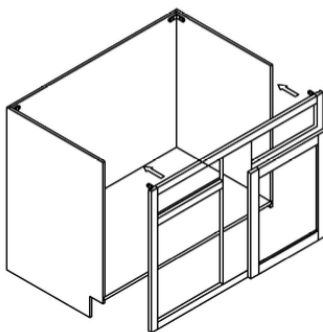
STEP 2



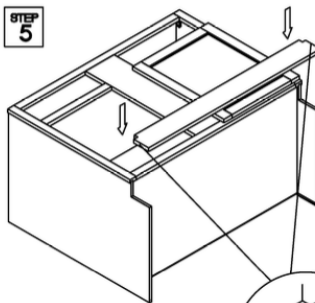
STEP 3



STEP 4



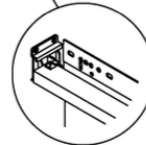
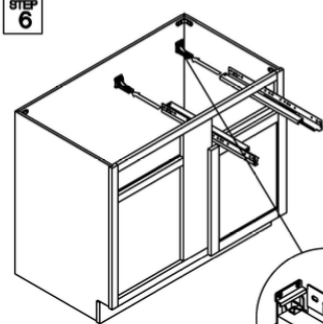
STEP 5



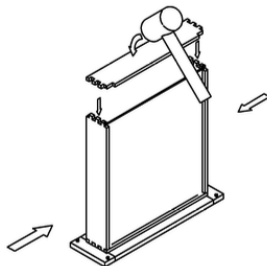
NAIL GUN



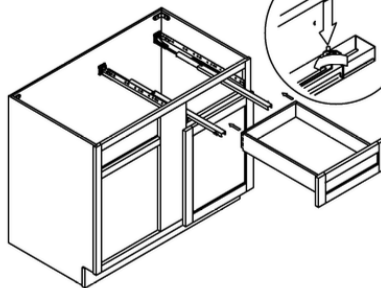
STEP 6



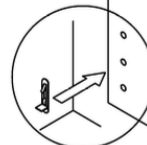
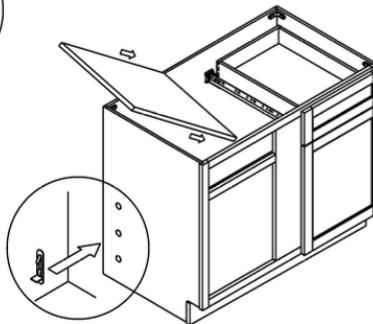
STEP 7



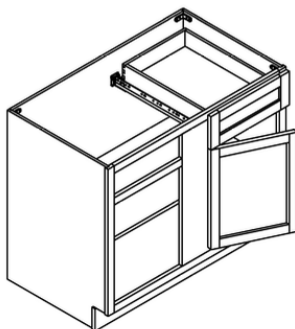
STEP 8



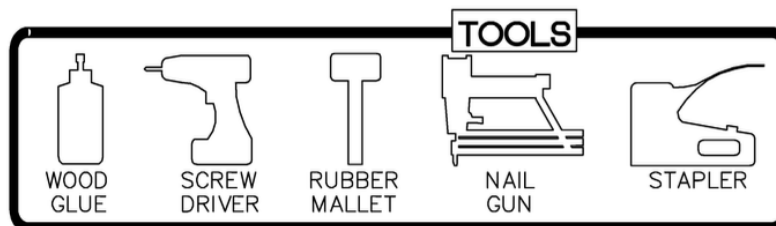
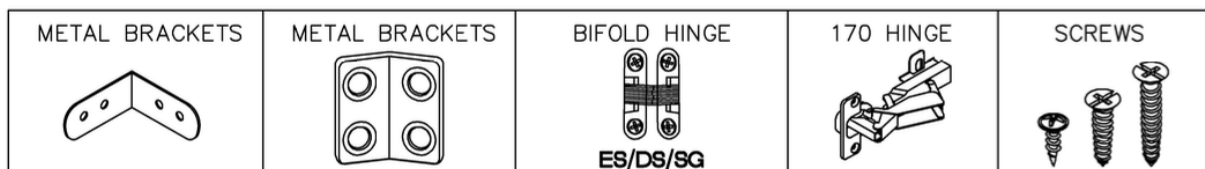
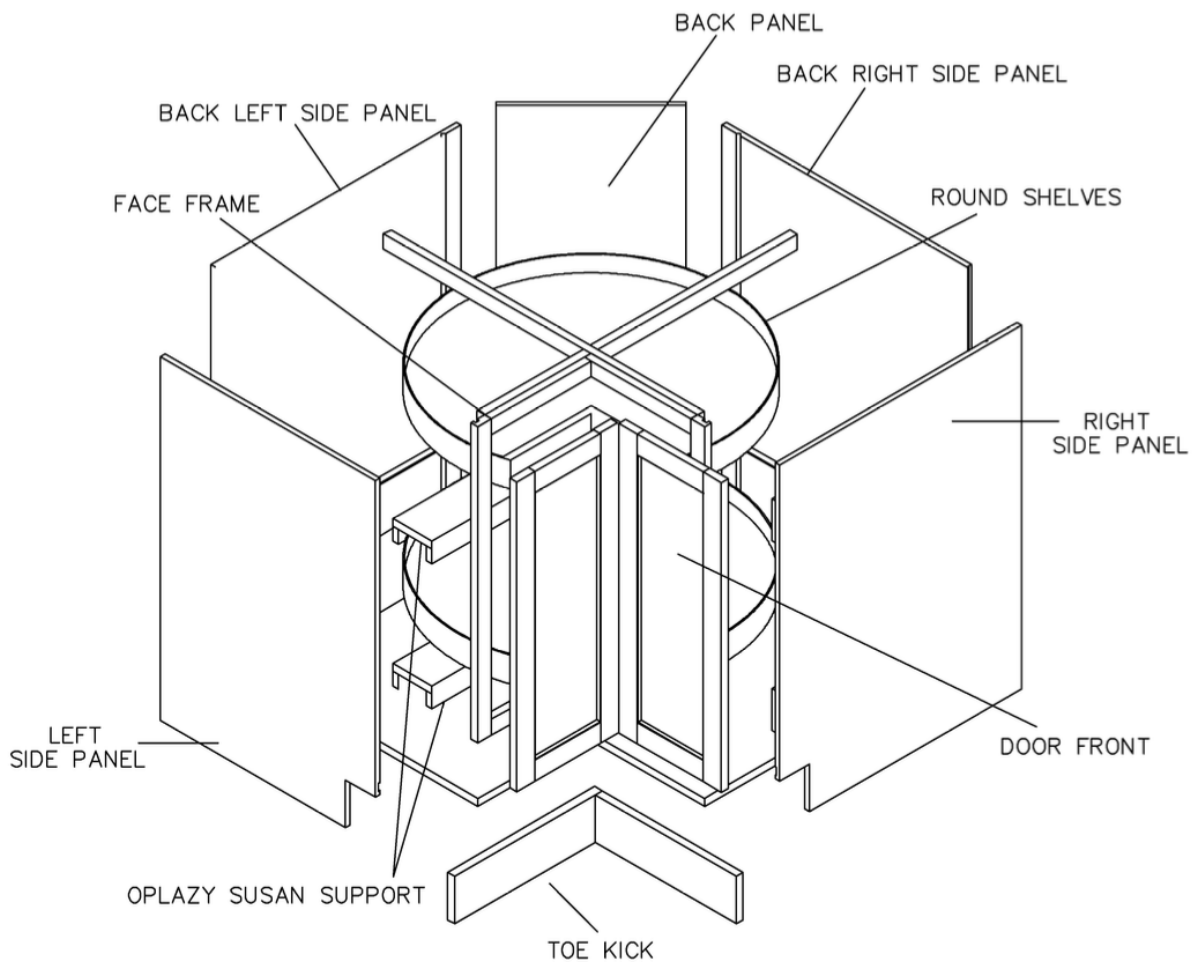
STEP 9



STEP 10



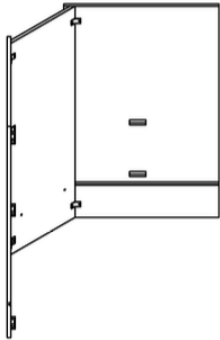
Assembly Instructions / Lazy Susan Corner Cabinet



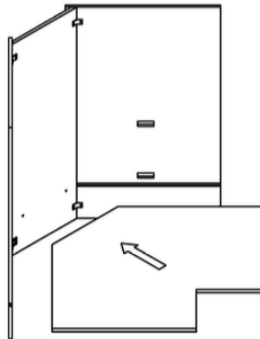
This instruction applies to the following items:
LZS33, LZS3612

Assembly Instructions / Lazy Susan Corner Cabinet

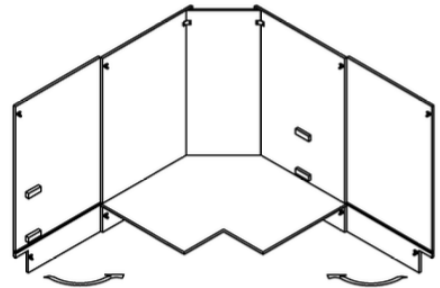
STEP 1



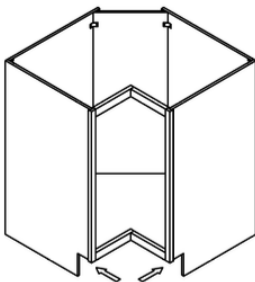
STEP 2



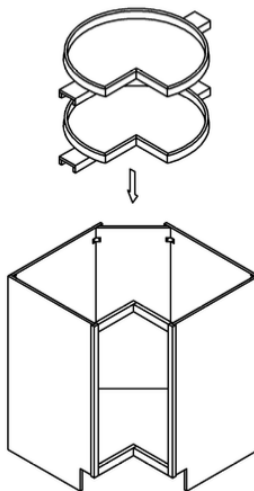
STEP 3



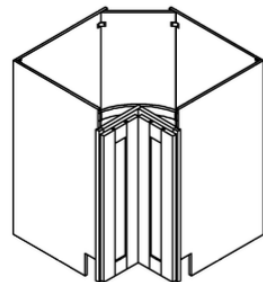
STEP 4



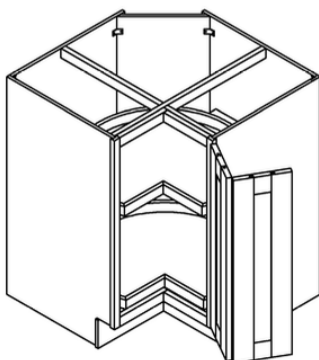
STEP 5



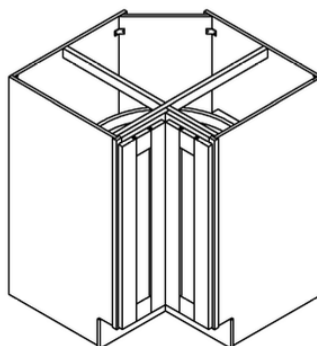
STEP 6



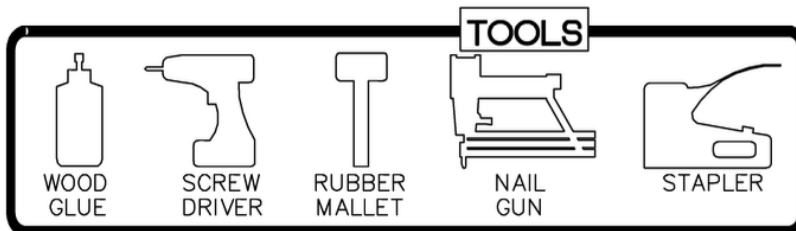
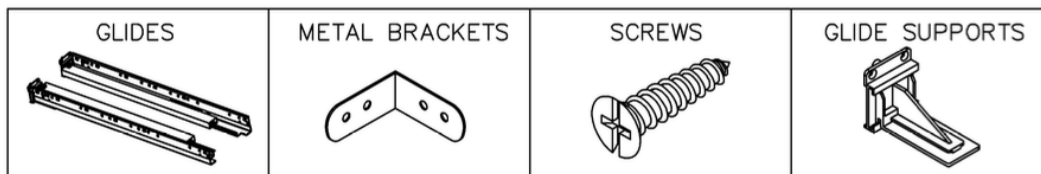
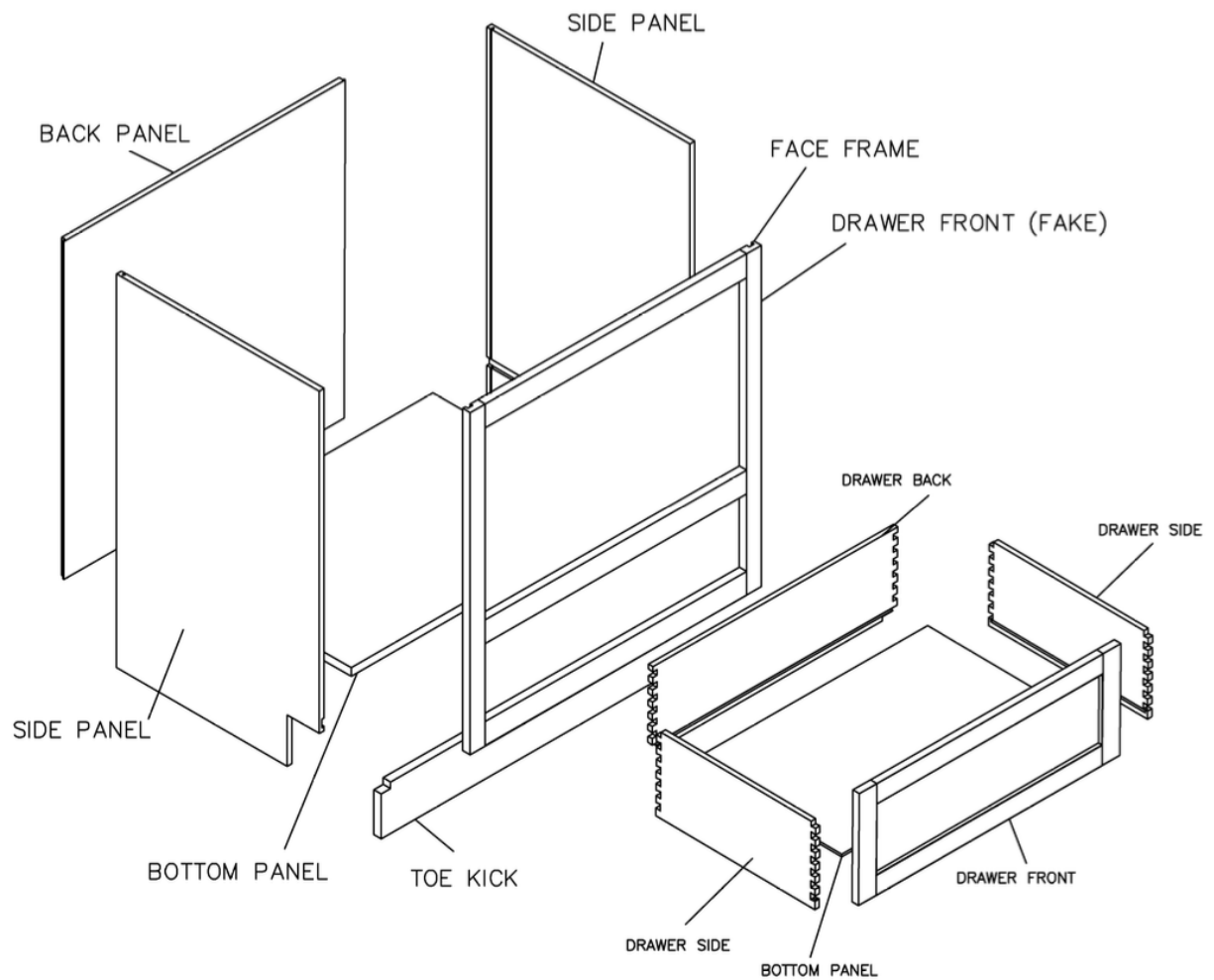
STEP 7



STEP 8



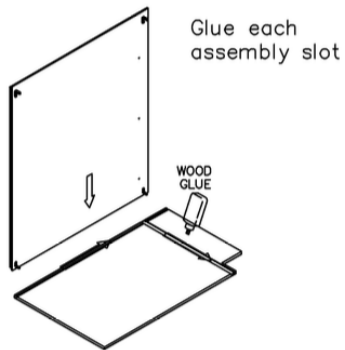
Assembly Instructions / Base Microwave Cabinet



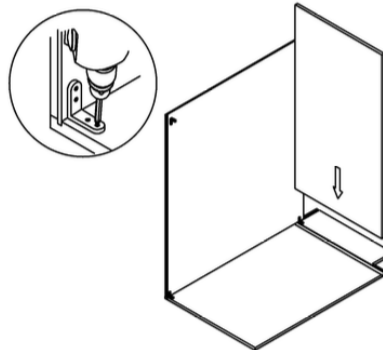
This instruction applies to the following items:
BMC30

Assembly Instructions / Base Microwave Cabinet

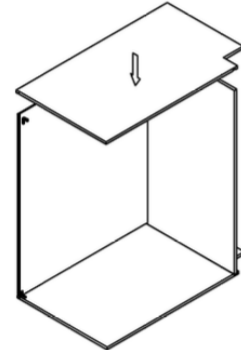
STEP 1



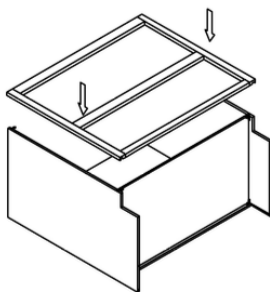
STEP 2



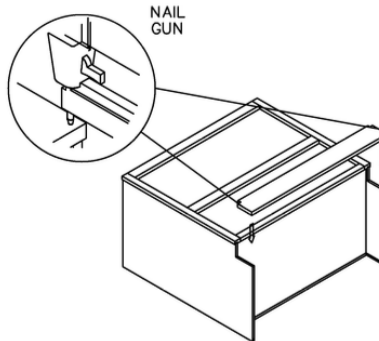
STEP 3



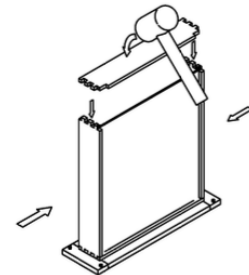
STEP 4



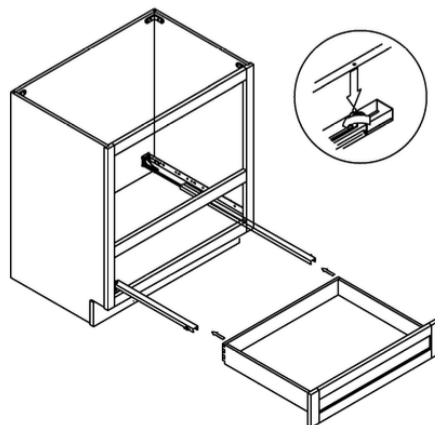
STEP 5



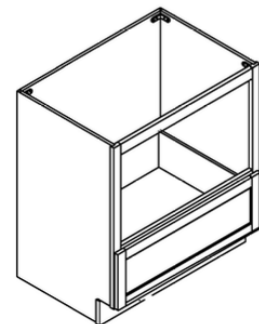
STEP 6



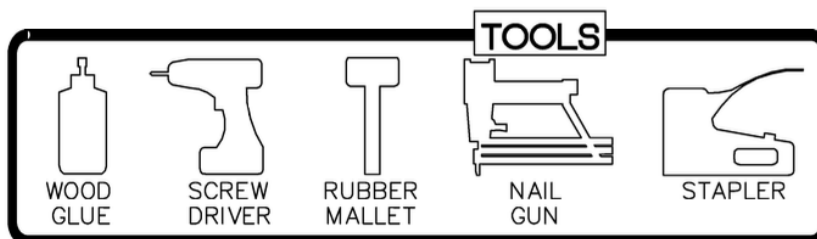
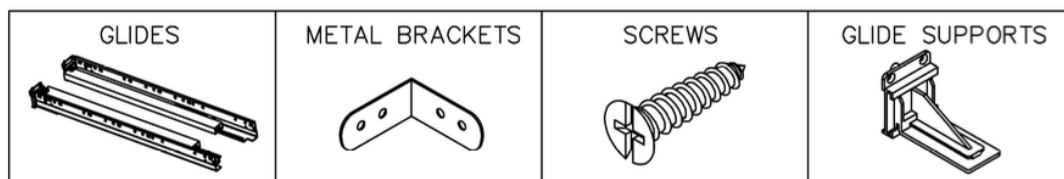
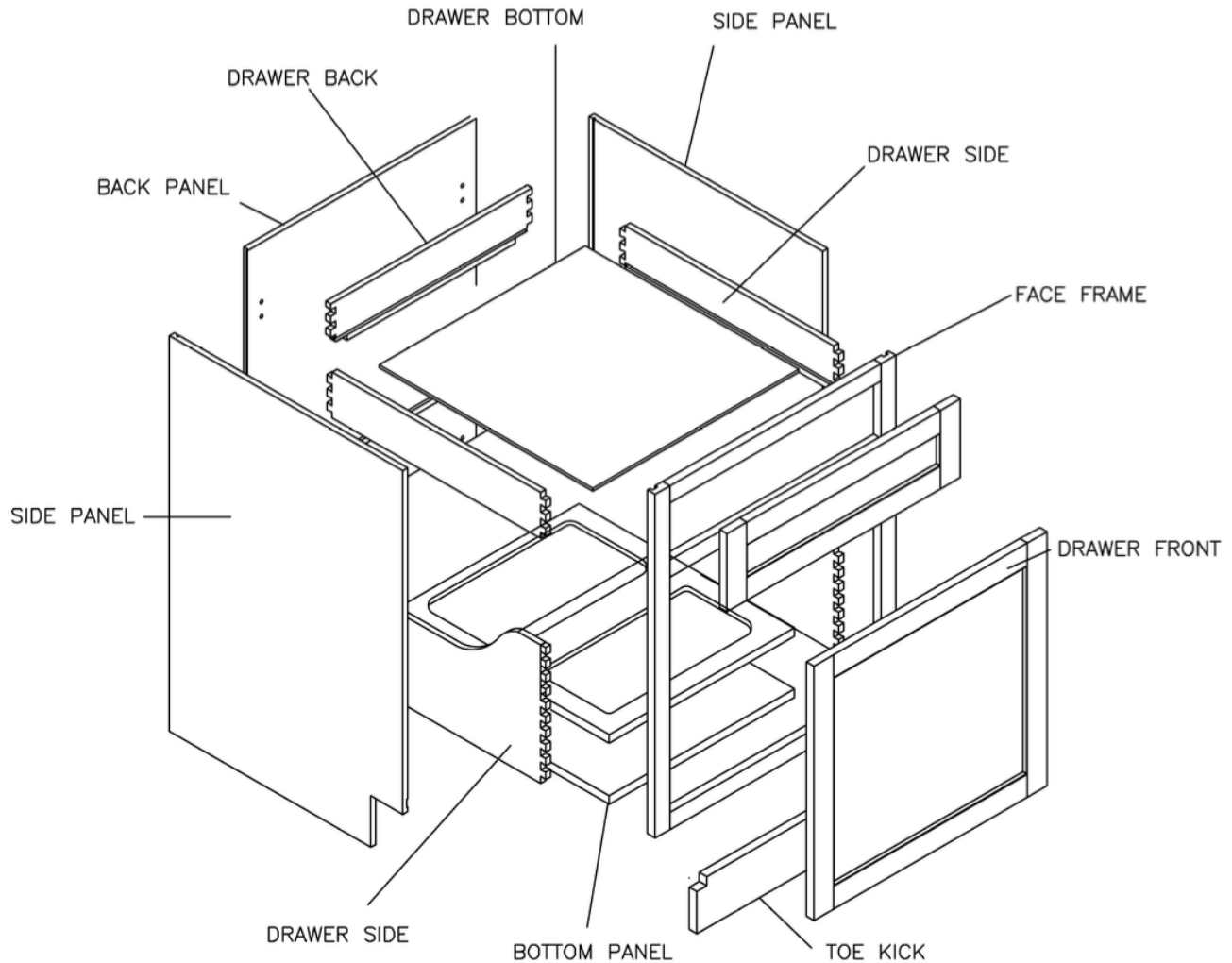
STEP 7



STEP 8



Assembly Instructions / Base Waste Basket Cabinet

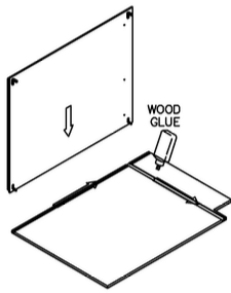


This instruction applies to the following items:
BWBKT18

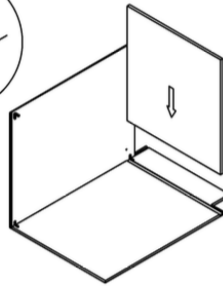
Assembly Instructions / Base Waste Basket Cabinet

STEP 1

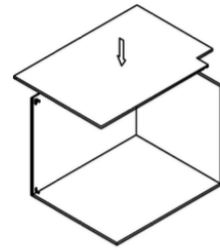
Glue each assembly slot



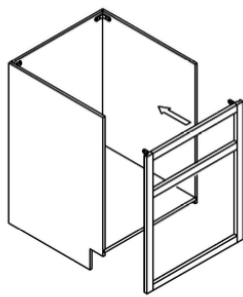
STEP 2



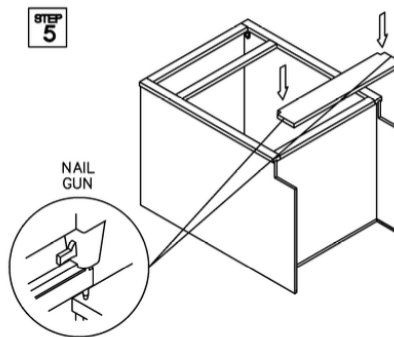
STEP 3



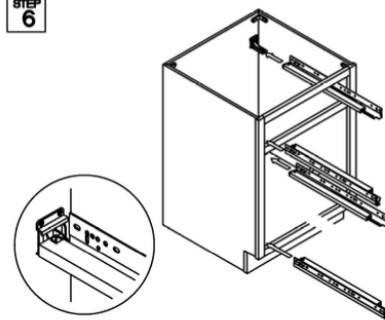
STEP 4



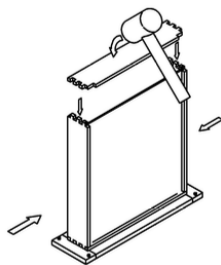
STEP 5



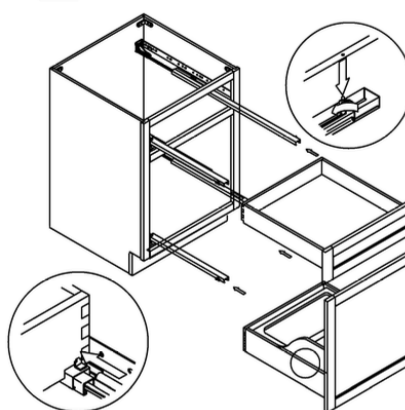
STEP 6



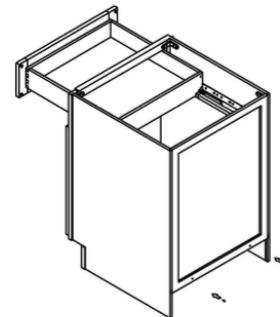
STEP 7



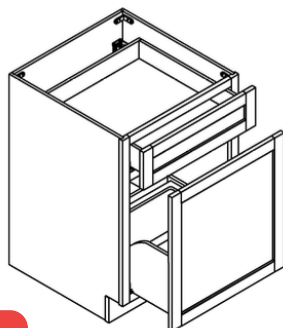
STEP 8



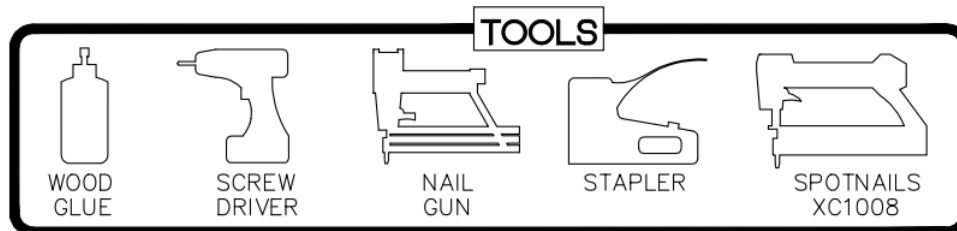
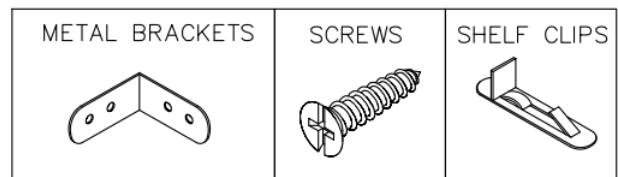
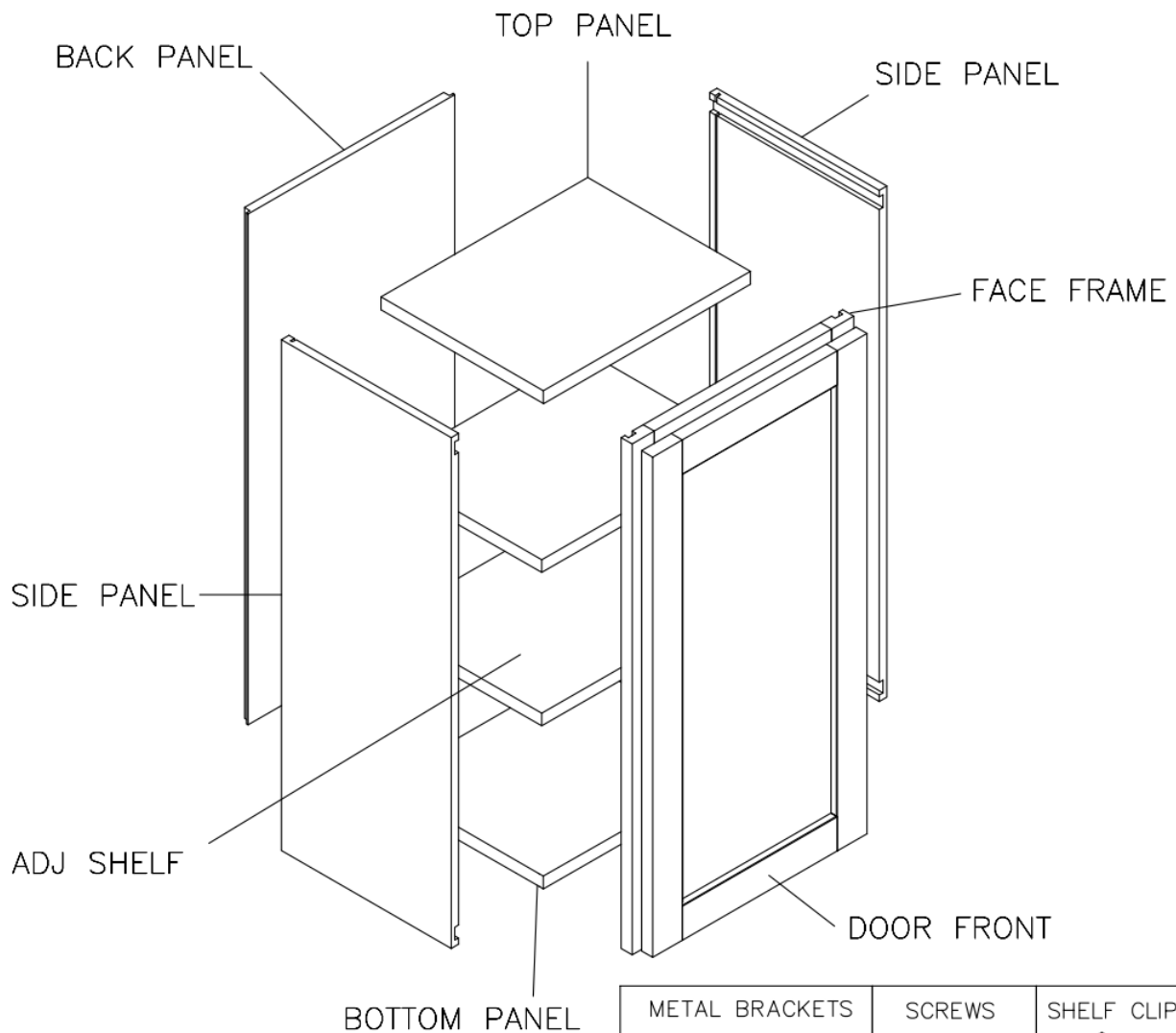
STEP 9



STEP 10



Assembly Instructions / Wall Cabinet (with shelves)

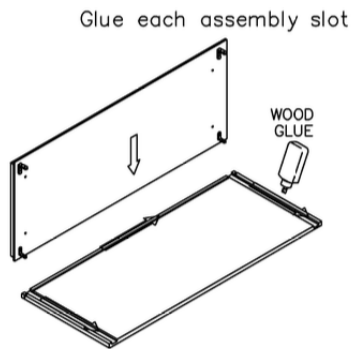


This instruction applies to the following items:

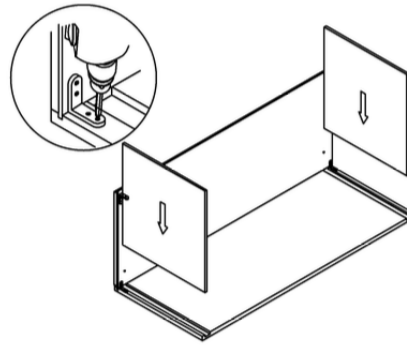
W1224-W2724	W0930-W2130	W2430-W3630
W3024-W3624	W0936-W2136	W2436-W3636
W302427-W362427	W0942-W2142	W2442-W3642

Assembly Instructions / Wall Cabinet (with shelves)

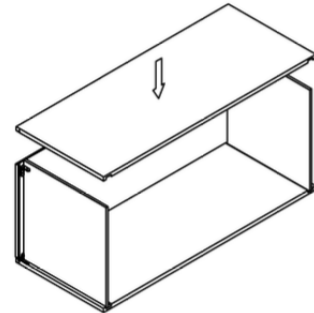
STEP 1



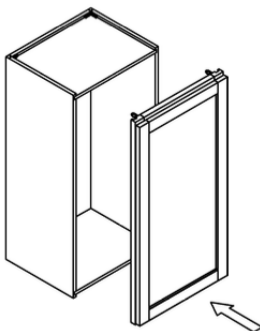
STEP 2



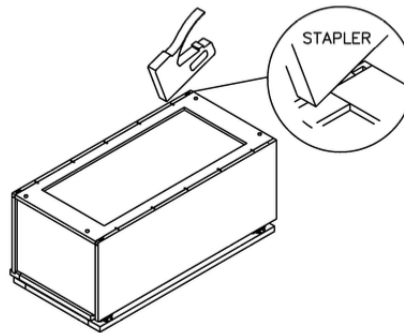
STEP 3



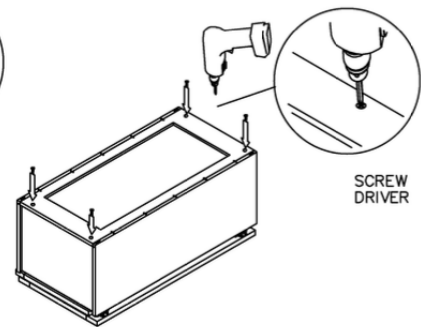
STEP 4



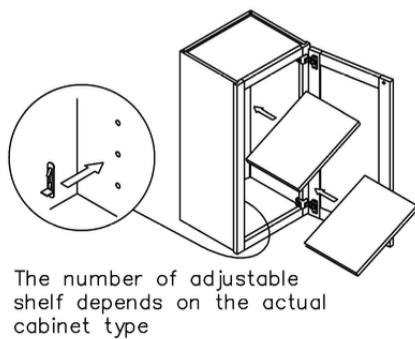
STEP 5



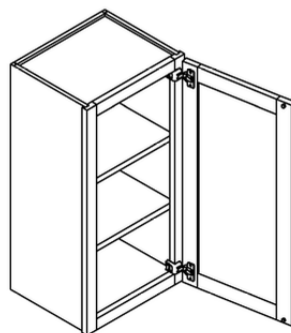
STEP 6



STEP 7

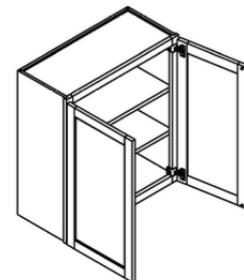


STEP 8

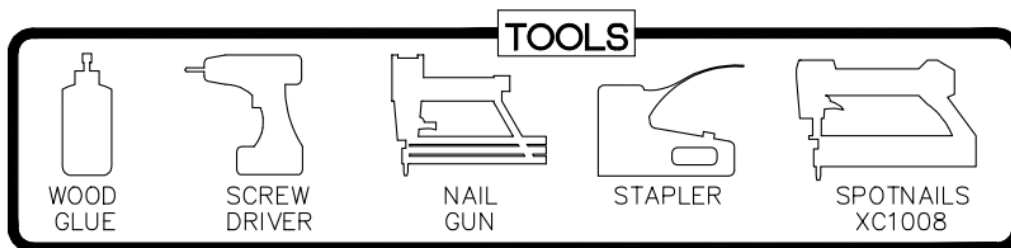
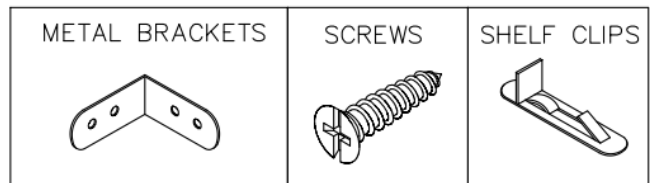
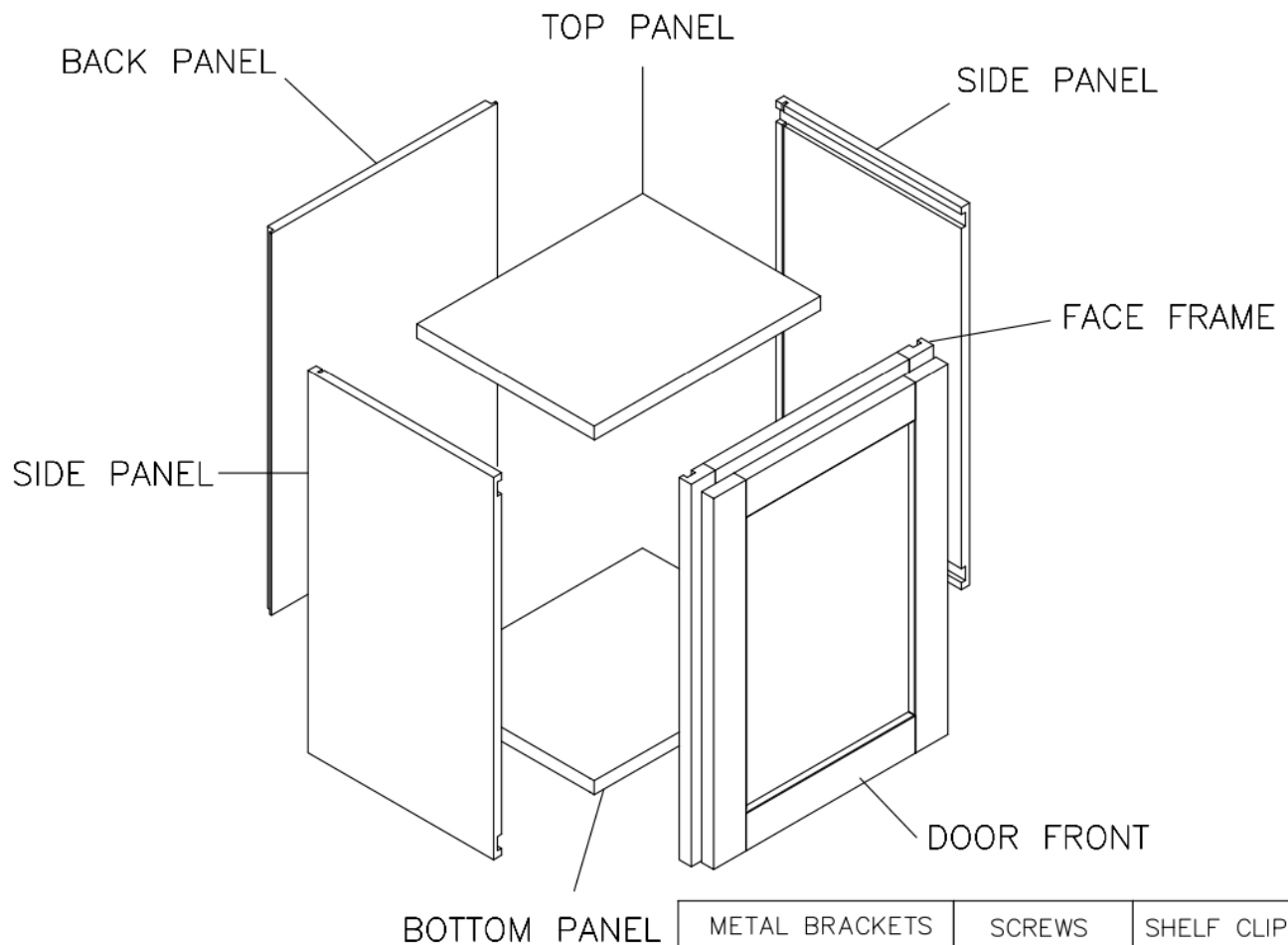


STEP 9

Double door installation method is the same as above



Assembly Instructions / Wall Cabinet (without shelves)



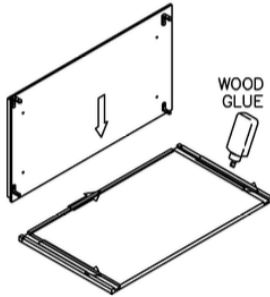
This instruction applies to the following items:

W2412-W2418	W3012-W3612	W3015-W3615	W3018-W3618
W301227-W361227	W301527-W361527	W301827-W361827	

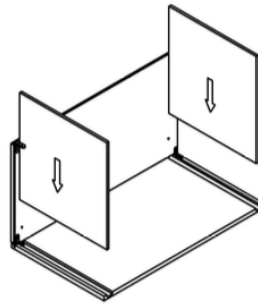
Assembly Instructions / Wall Cabinet (without shelves)

STEP 1

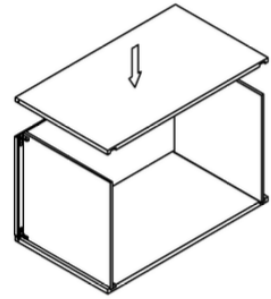
Glue each assembly slot



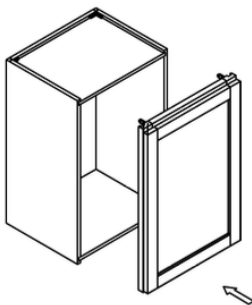
STEP 2



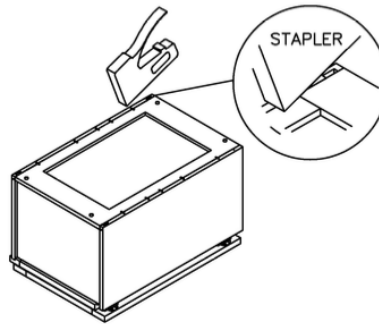
STEP 3



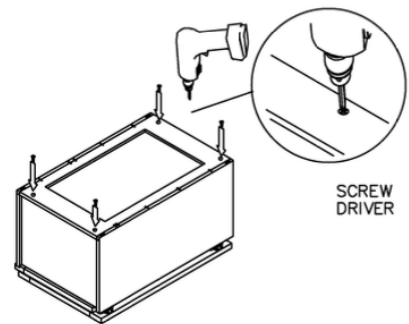
STEP 4



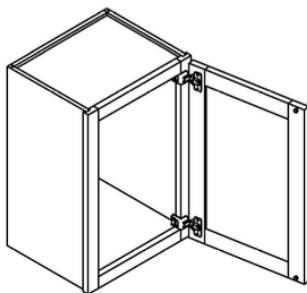
STEP 5



STEP 6

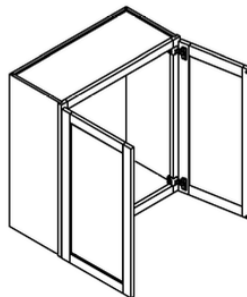


STEP 7

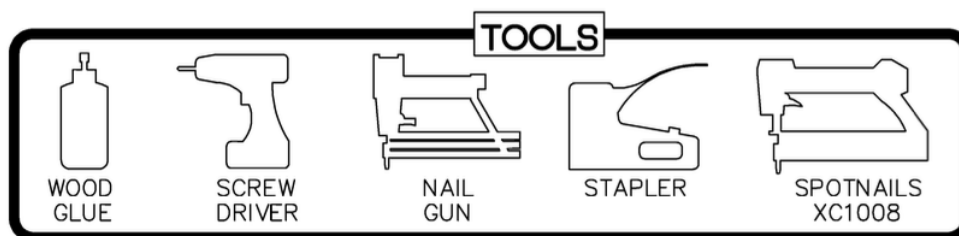
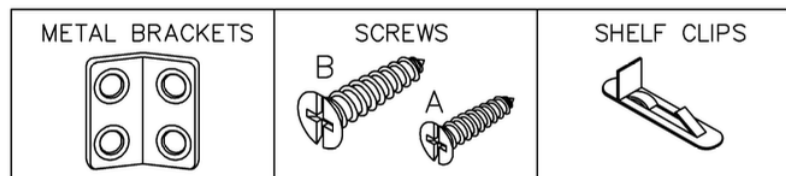
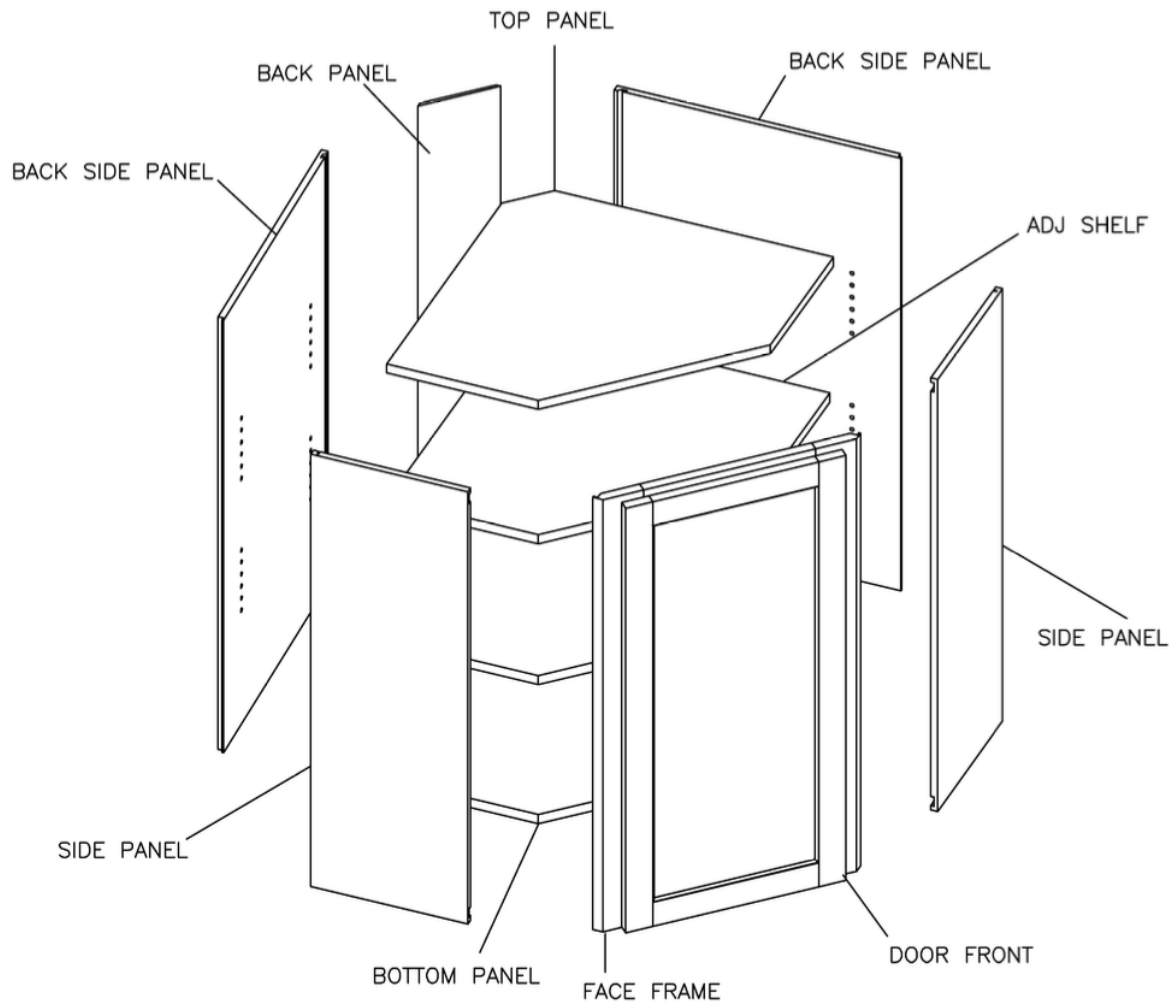


STEP 8

Double door installation method is the same as above



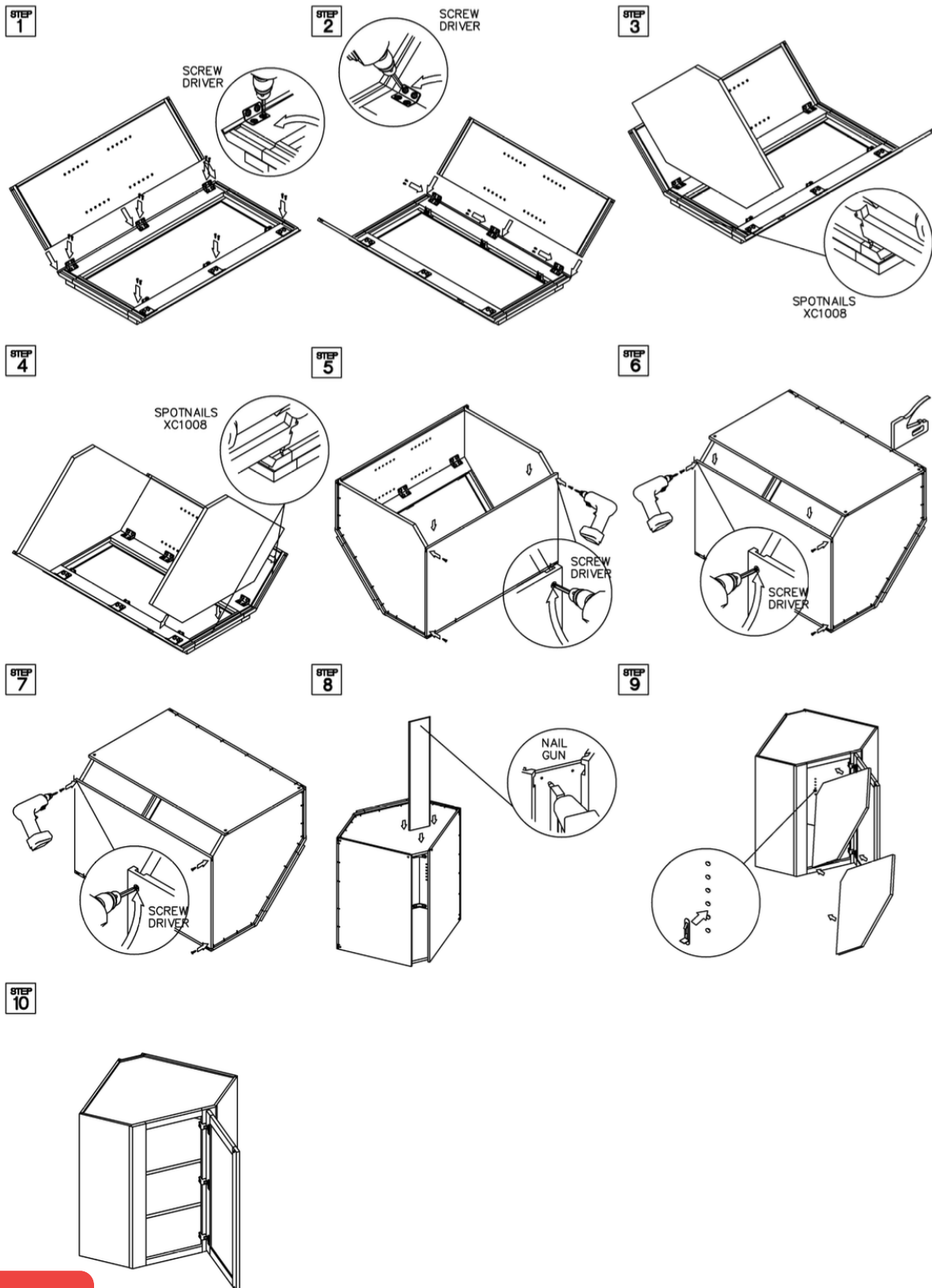
Assembly Instructions / Wall Diagonal Corner Cabinet



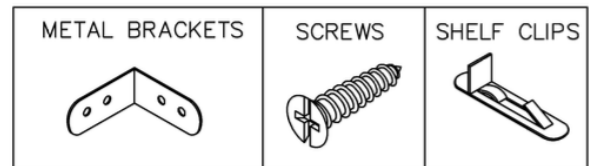
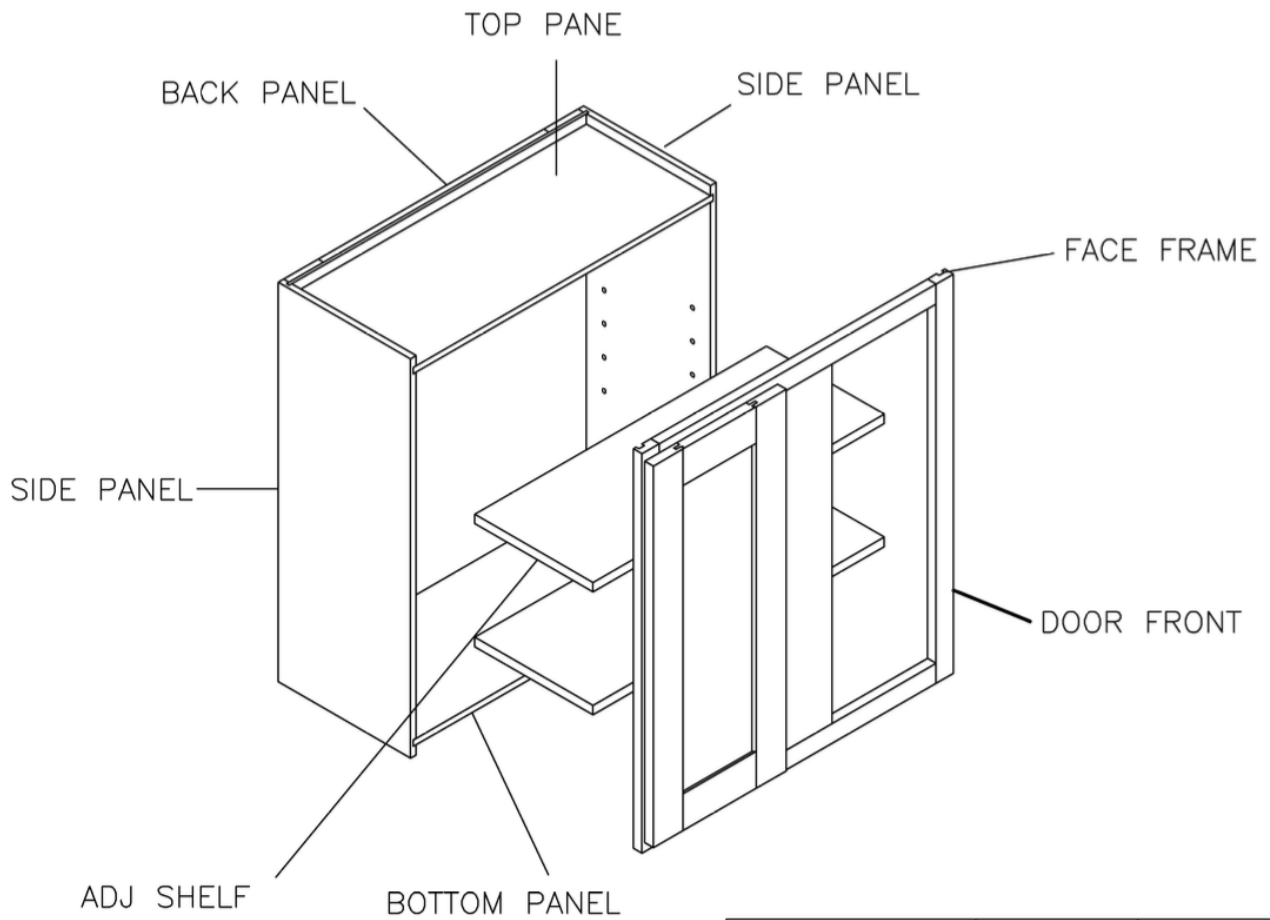
This instruction applies to the following items:

WDC243012, WDC243612, WDC244212

Assembly Instructions / Wall Diagonal Corner Cabinet



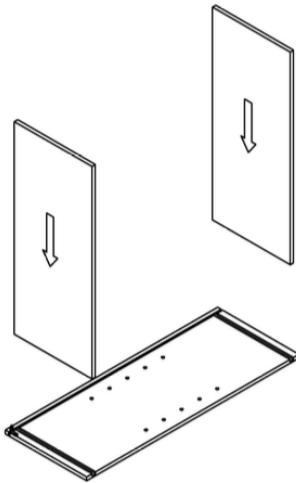
Assembly Instructions / Wall Blind Corner Cabinet



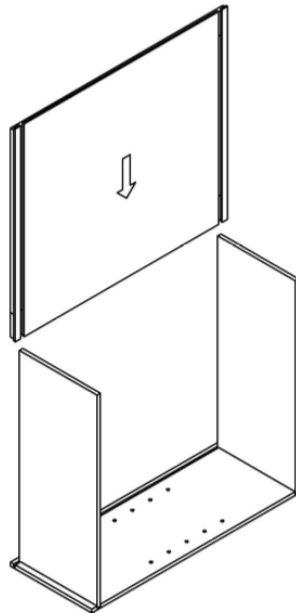
This instruction applies to the following items:
WBC2730-WBC2742

Assembly Instructions / Wall Blind Corner Cabinet

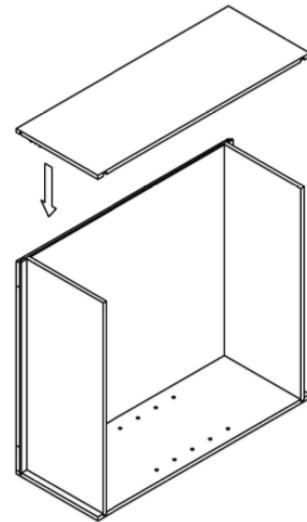
STEP 1



STEP 2



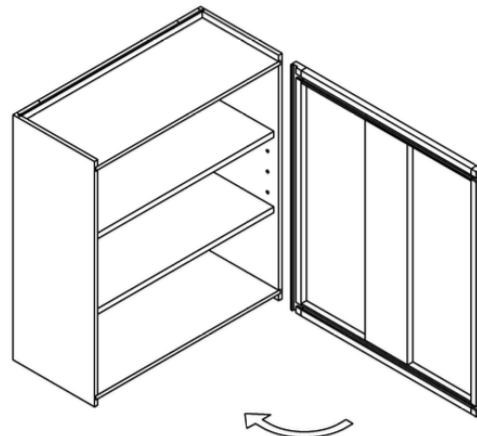
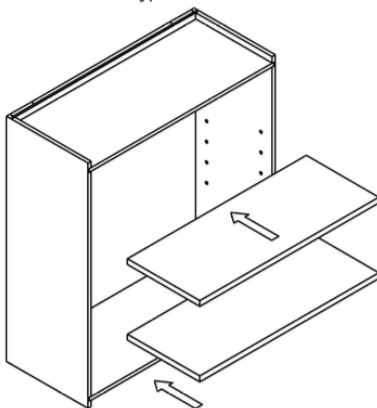
STEP 3



STEP 4

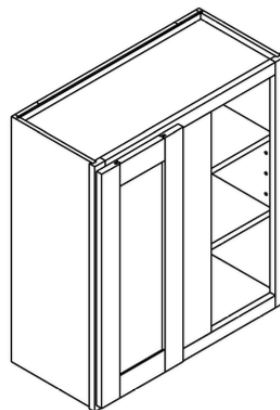
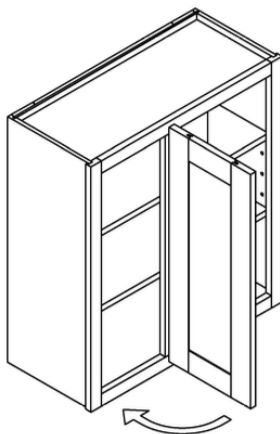
The number of adjustable shelf depends on the actual cabinet type

STEP 5

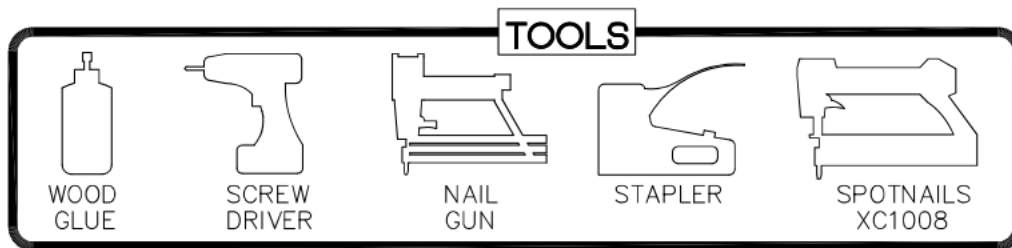
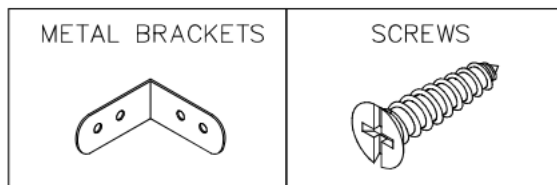
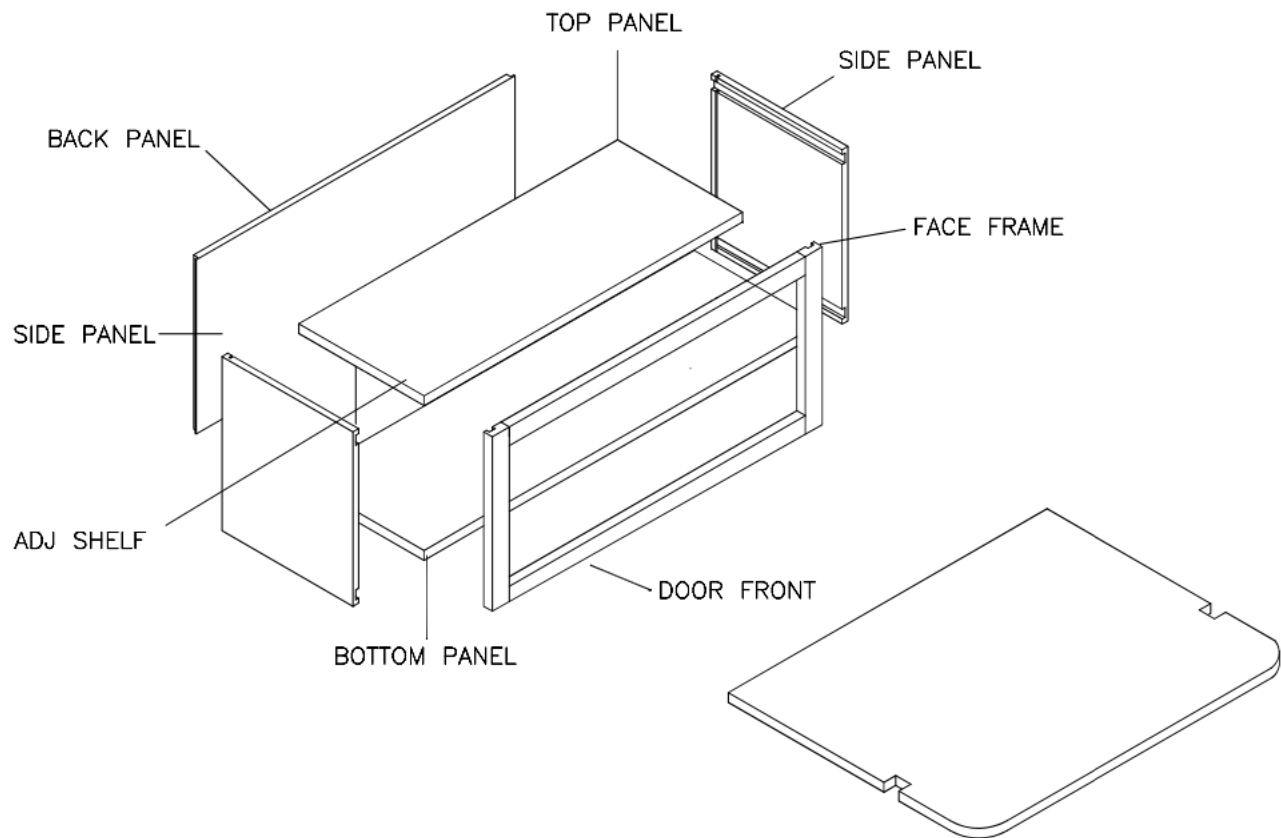


STEP 6

STEP 7



Assembly Instructions / Wall Microwave Cabinet

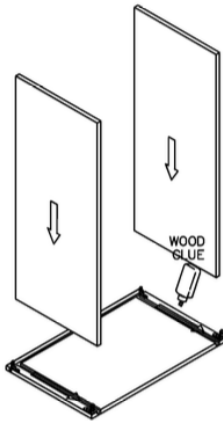


This instruction applies to the following items:
WMC3018

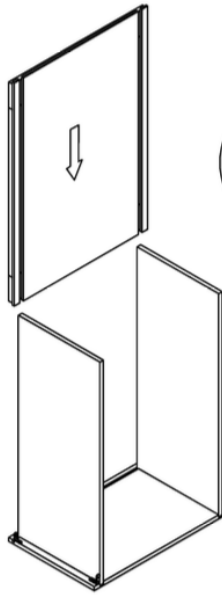
Assembly Instructions / Wall Microwave Cabinet

STEP 1

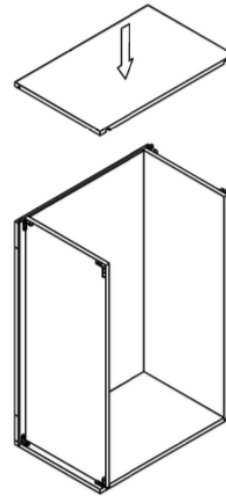
Glue each assembly slot



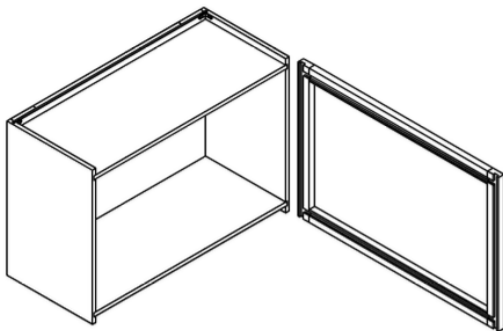
STEP 2



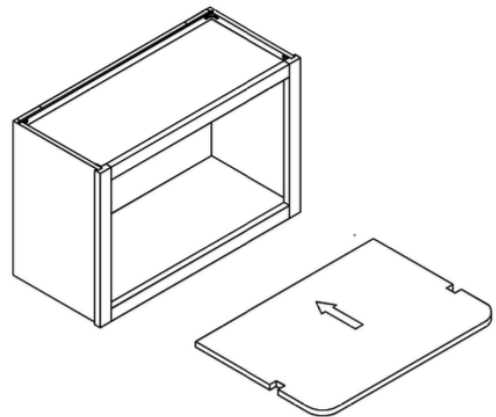
STEP 3



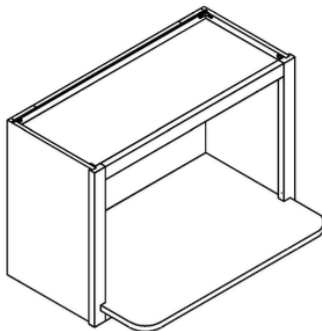
STEP 4



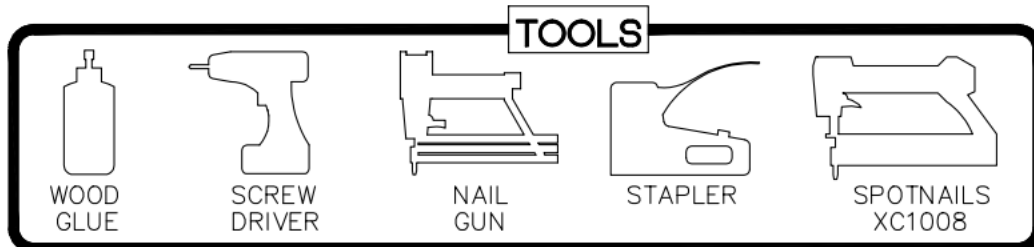
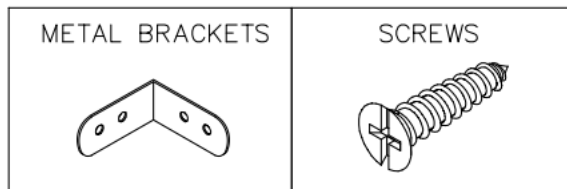
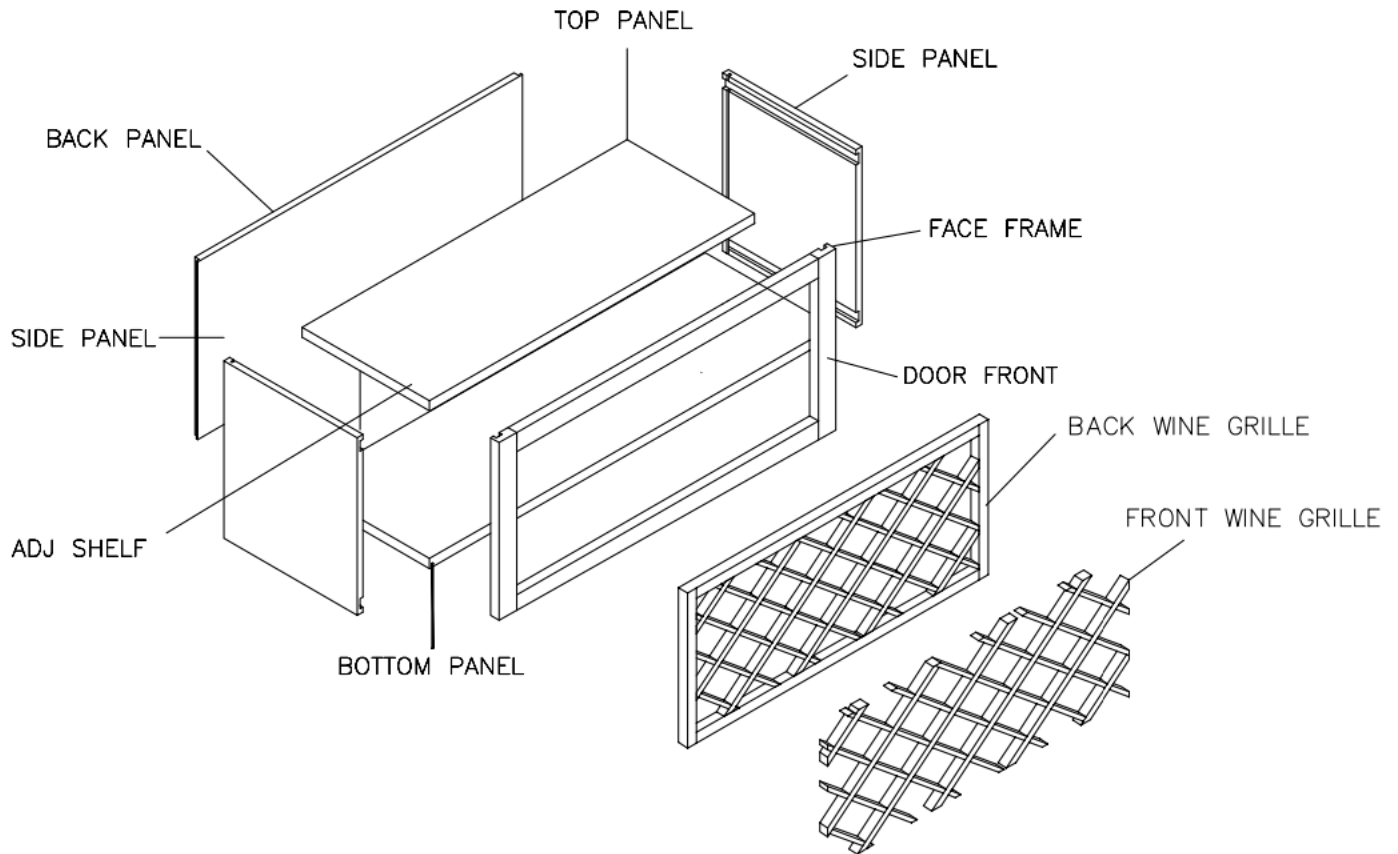
STEP 5



STEP 6



Assembly Instructions / Wall Wine Rack Cabinet

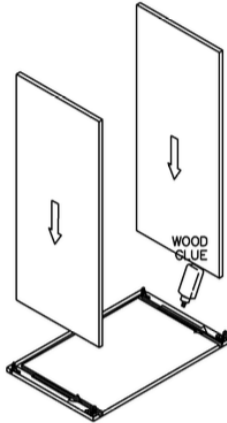


This instruction applies to the following items:
WRC3018

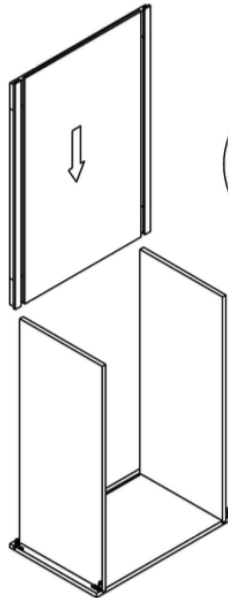
Assembly Instructions / Wall Wine Rack Cabinet

STEP 1

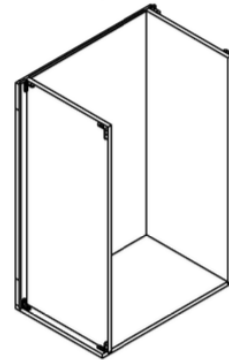
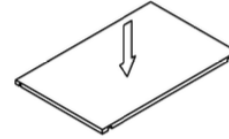
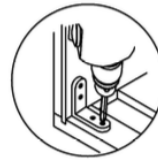
Glue each assembly slot



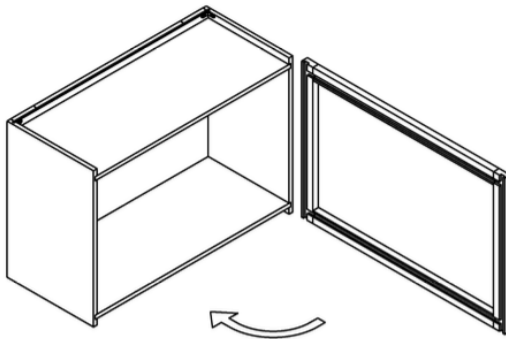
STEP 2



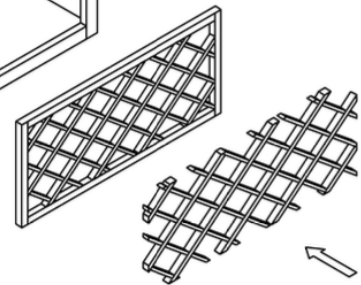
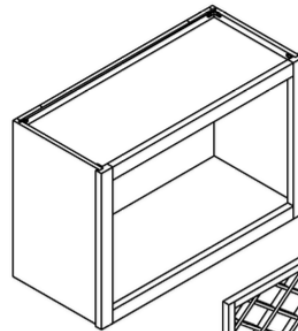
STEP 3



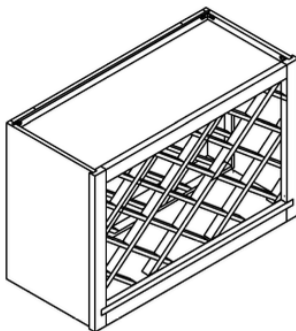
STEP 4



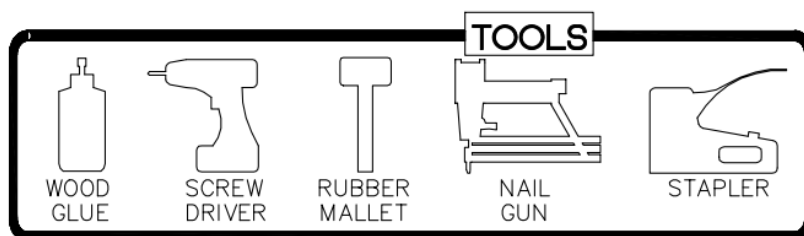
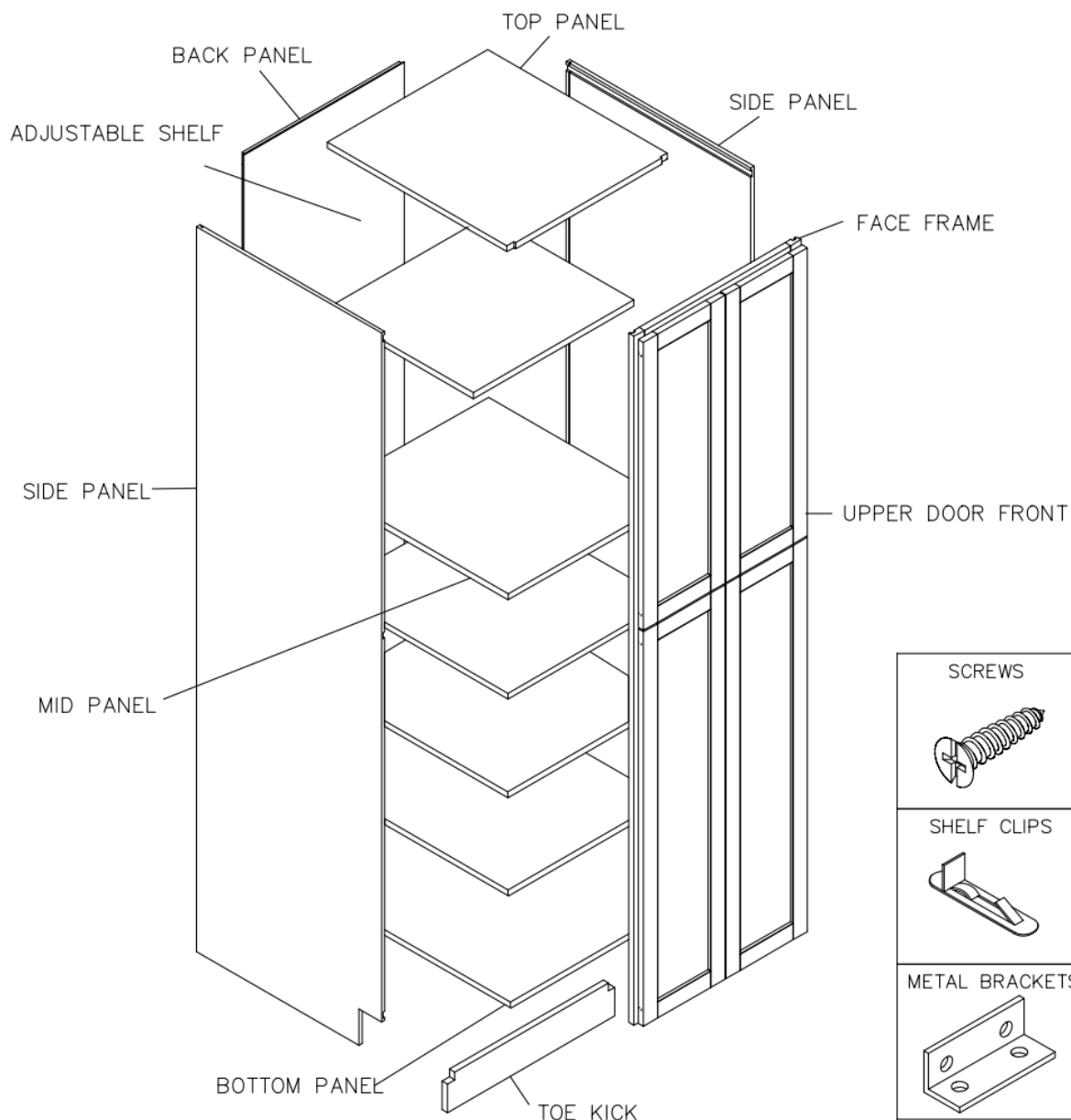
STEP 5



STEP 6



Assembly Instructions / Wall Pantry Cabinet



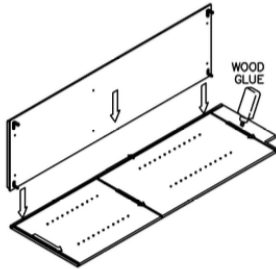
This instruction applies to the following items:

WP188427, WP248427, WP189027, WP249027, WP189627, WP249627
WP308427, WP309027, WP309627,

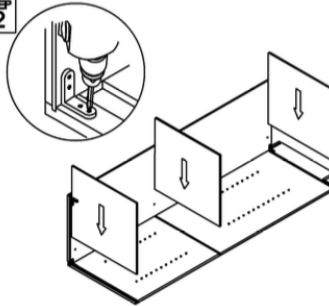
Assembly Instructions / Wall Pantry Cabinet

STEP 1

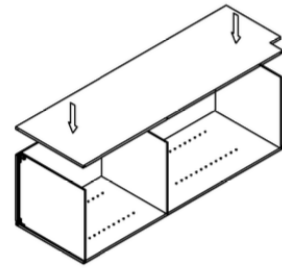
Glue each assembly slot



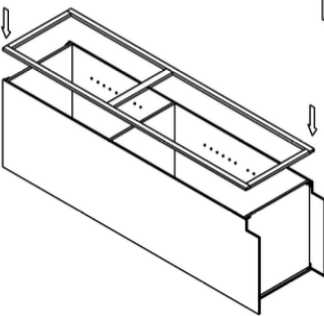
STEP 2



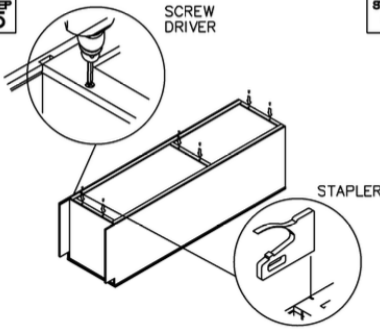
STEP 3



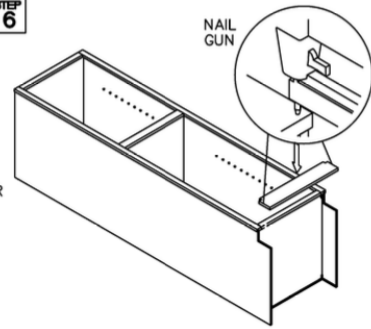
STEP 4



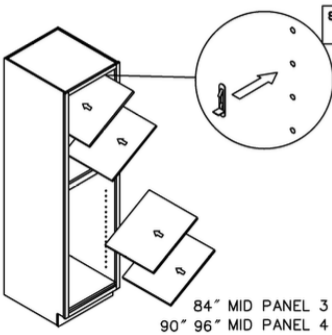
STEP 5



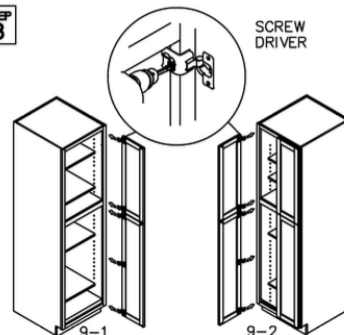
STEP 6



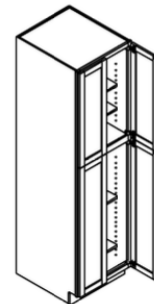
STEP 7



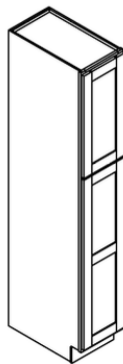
STEP 8



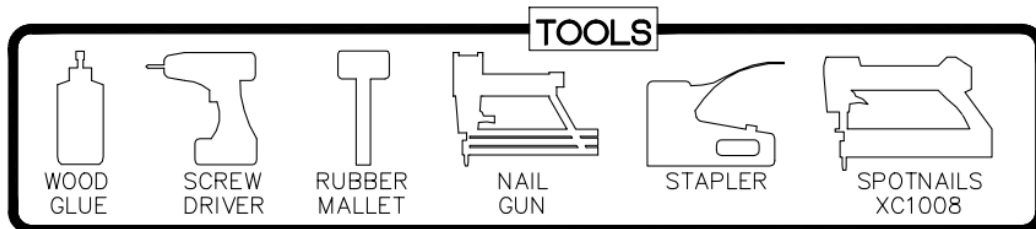
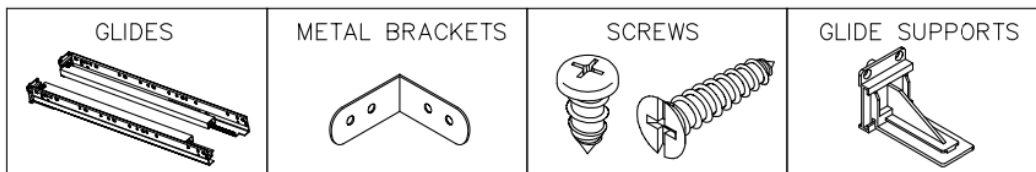
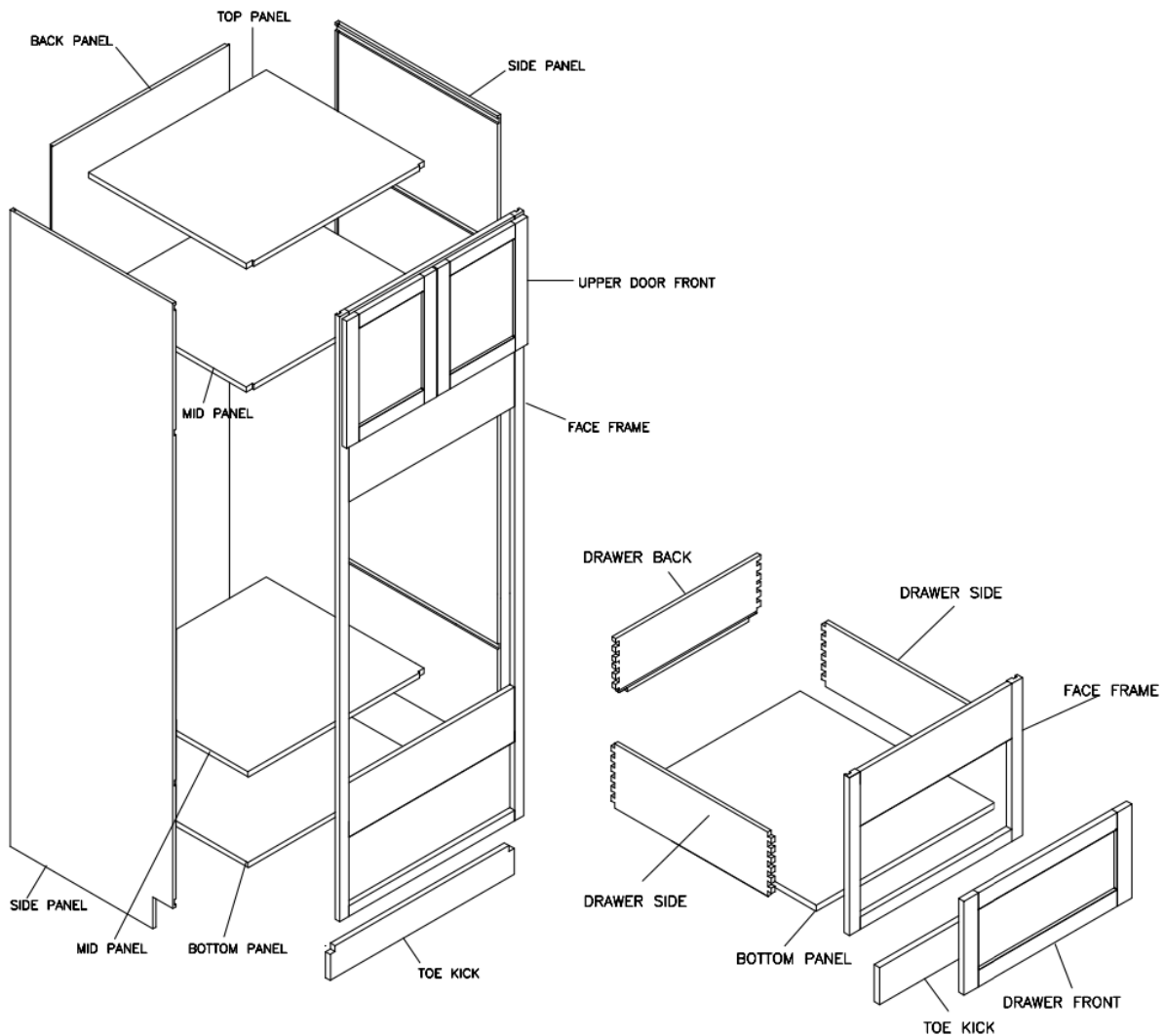
STEP 9



STEP 10

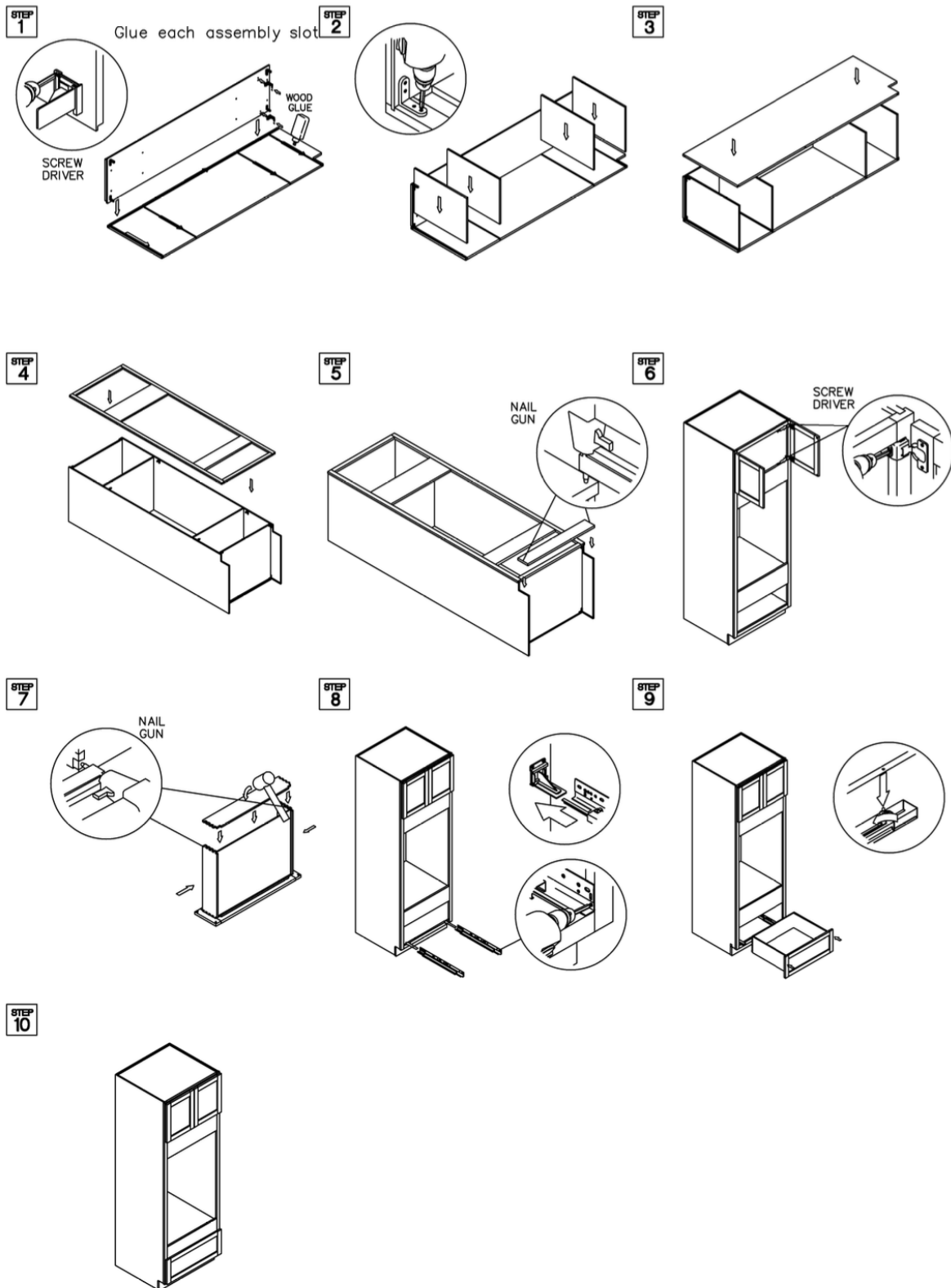


Assembly Instructions / Double Oven Cabinet

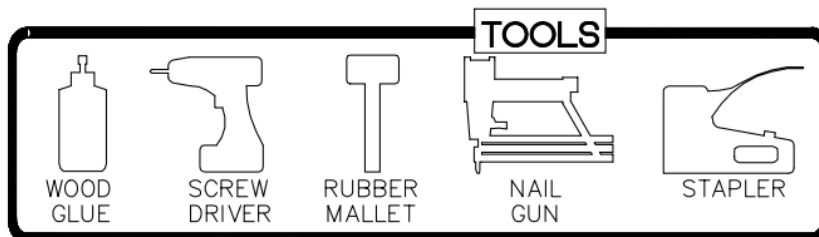
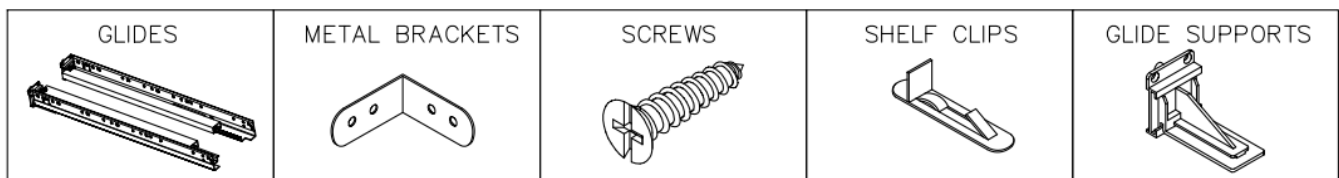
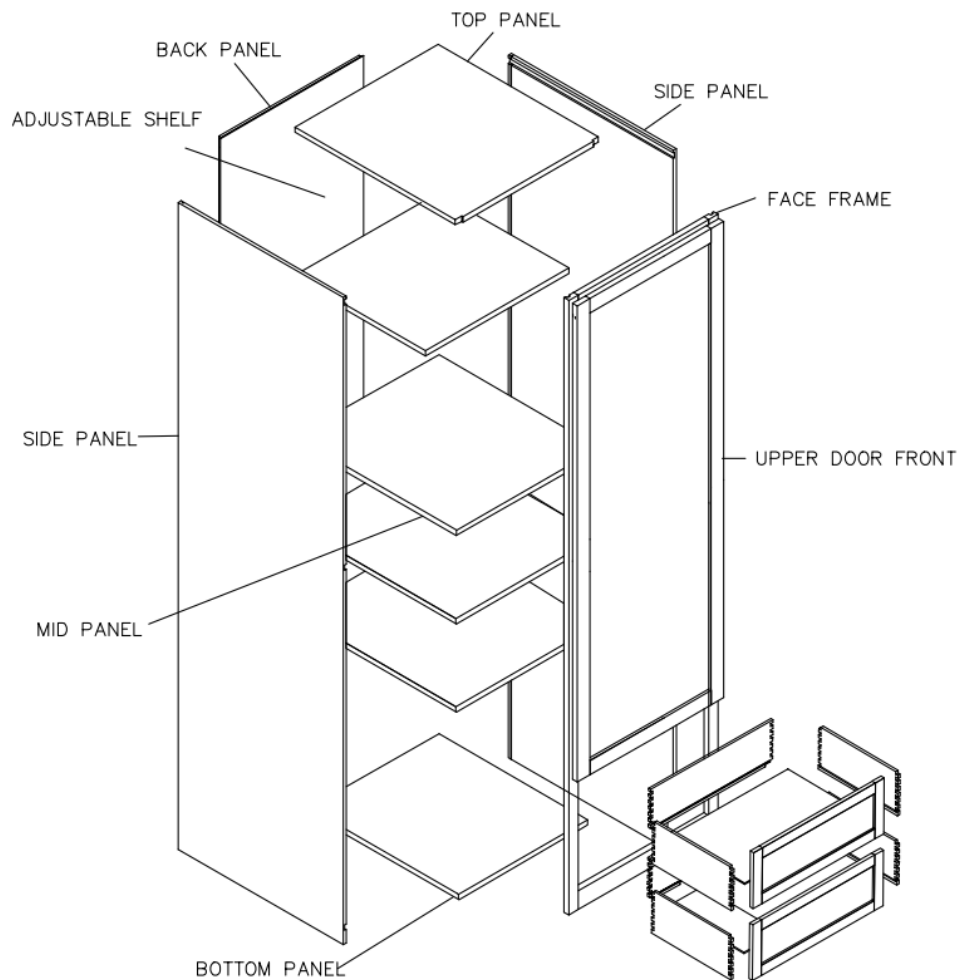


This instruction applies to the following items:
OVD338427,OVD339027,OVD339627

Assembly Instructions / Double Oven Cabinet



Assembly Instructions / Counter Linen Cabinet

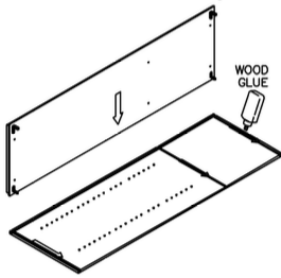


This instruction applies to the following items:
CL156012

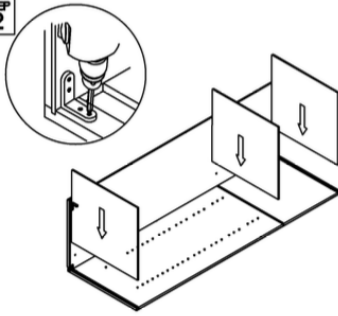
Assembly Instructions / Counter Linen Cabinet

STEP 1

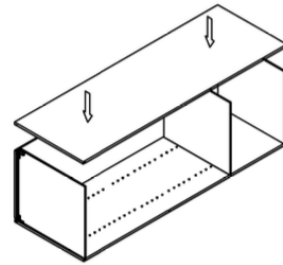
Glue each assembly slot



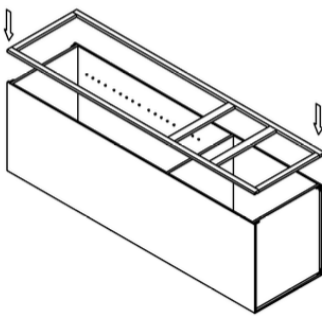
STEP 2



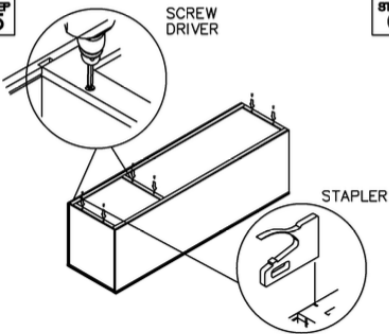
STEP 3



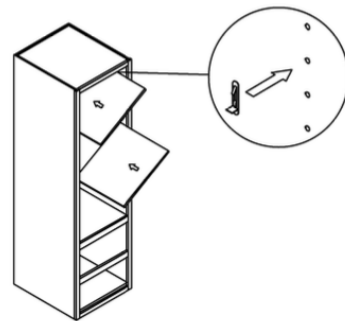
STEP 4



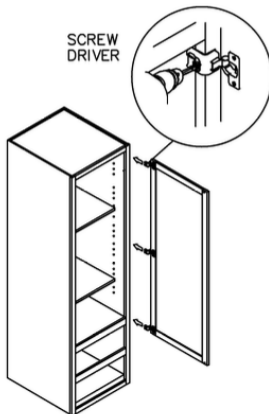
STEP 5



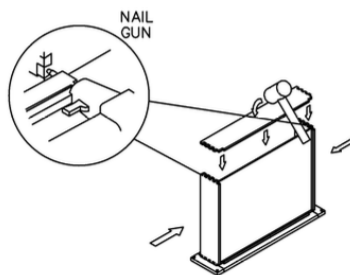
STEP 6



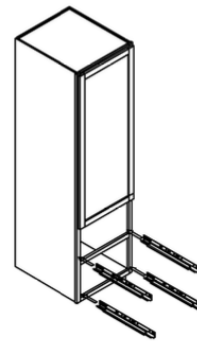
STEP 7



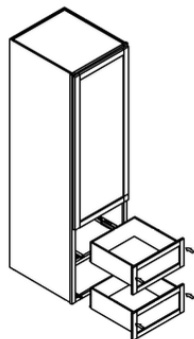
STEP 8



STEP 9



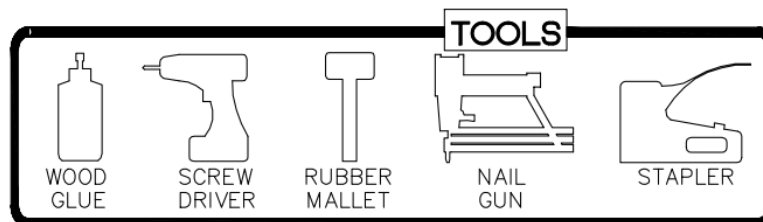
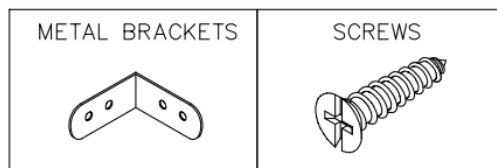
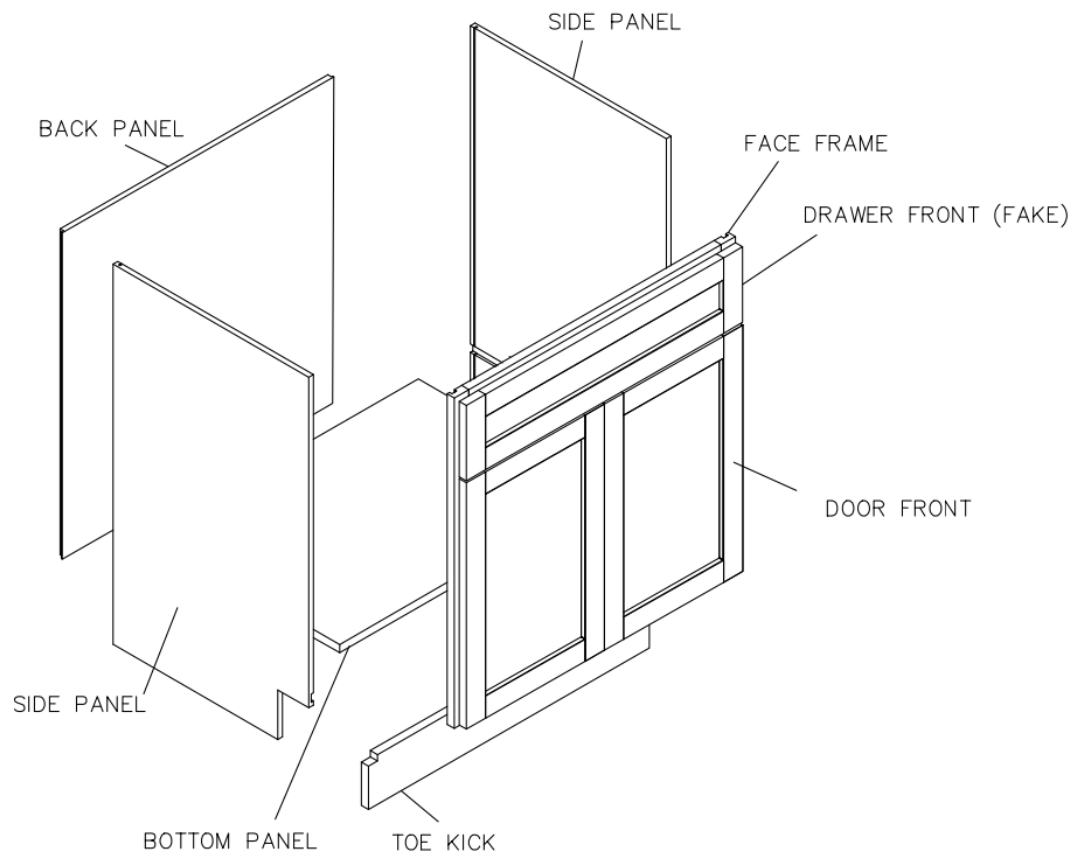
STEP 10



STEP 11



Assembly Instructions / Vanity Cabinet



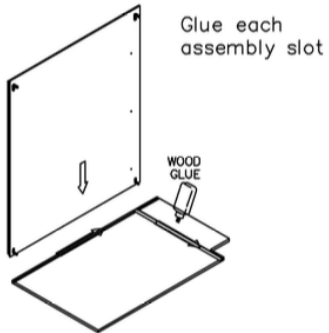
This instruction applies to the following items:

VAN24-VAN30 (Single false drawer)

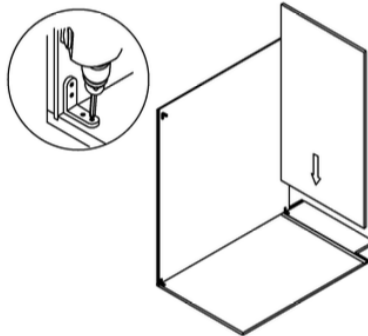
VSB36 (Double false drawers)

Assembly Instructions / Vanity Cabinet

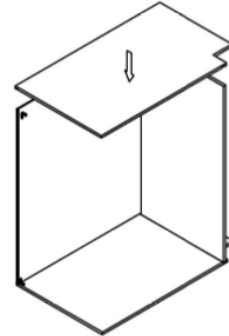
STEP 1



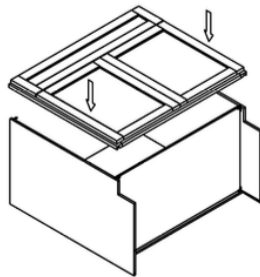
STEP 2



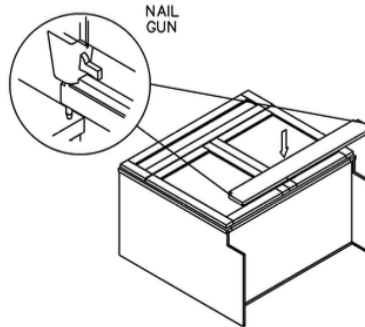
STEP 3



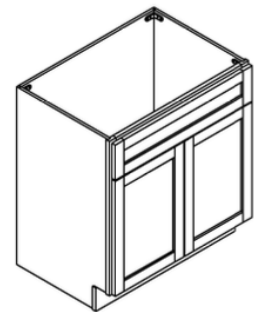
STEP 4



STEP 5

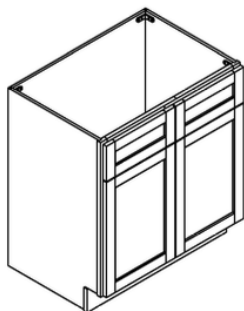


STEP 6



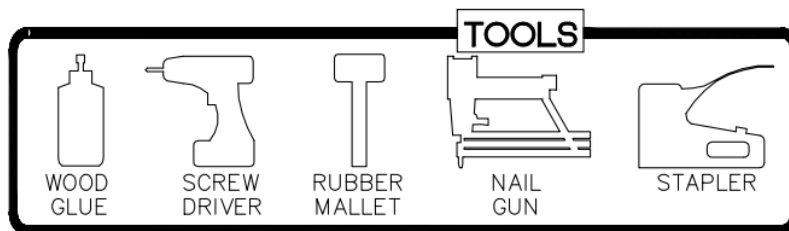
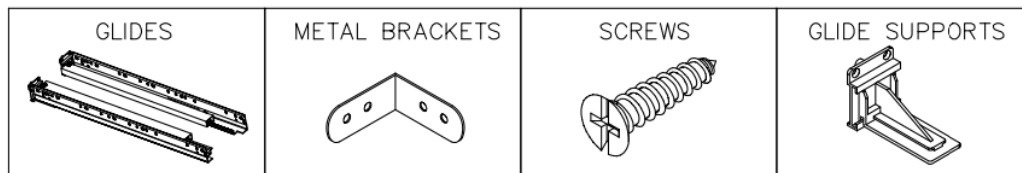
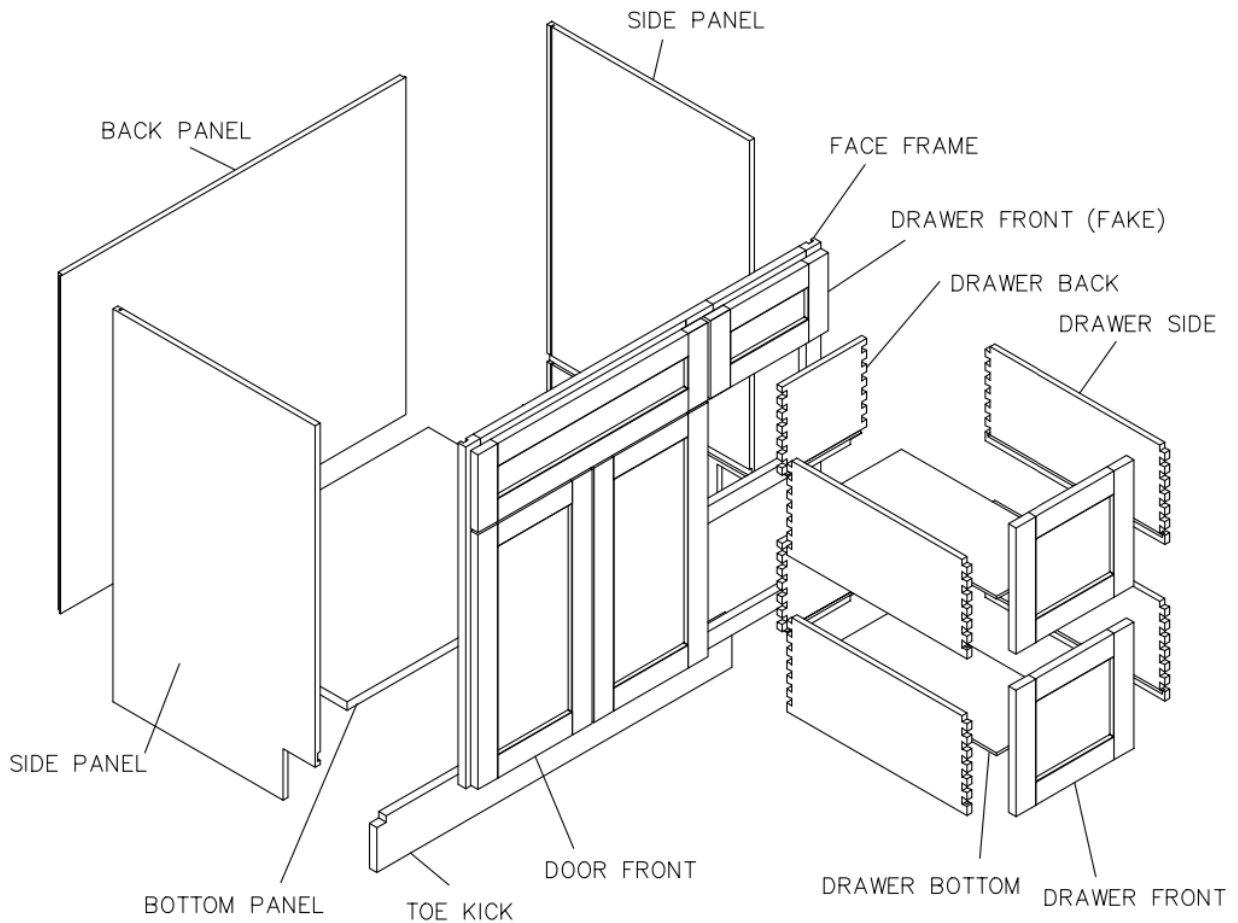
(Single false drawer)

STEP 7



(Double false drawers)

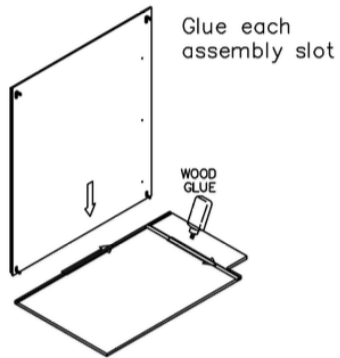
Assembly Instructions / Vanity Cabinet (2 Drawers)



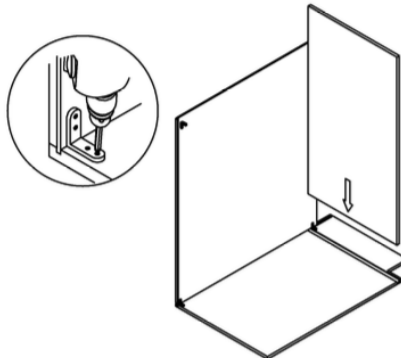
This instruction applies to the following items:
VAN36DL, VAN36DR ,VAN42DL, VAN42DR

Assembly Instructions / Vanity Cabinet (2 Drawers)

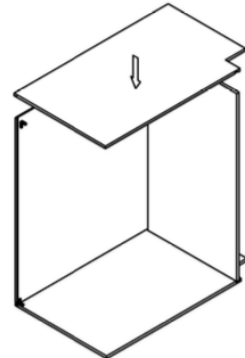
STEP 1



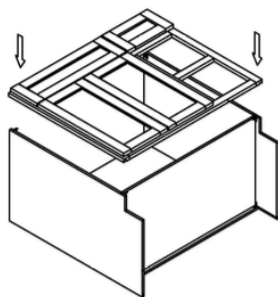
STEP 2



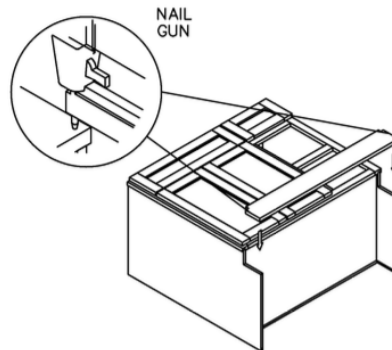
STEP 3



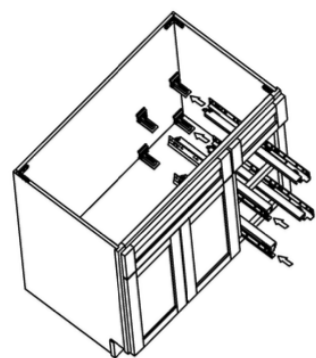
STEP 4



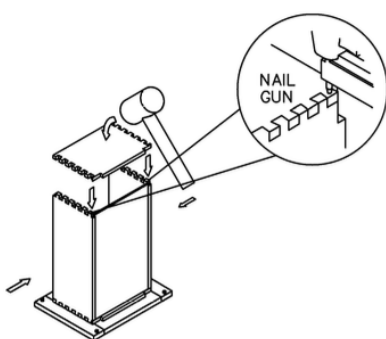
STEP 5



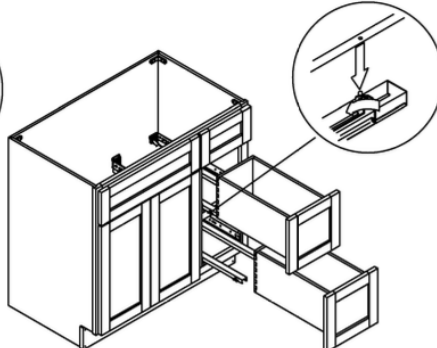
STEP 6



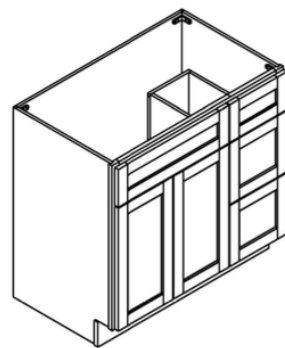
STEP 7



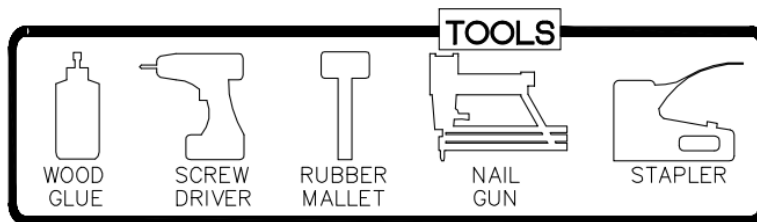
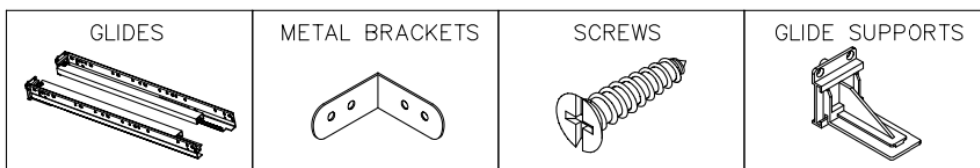
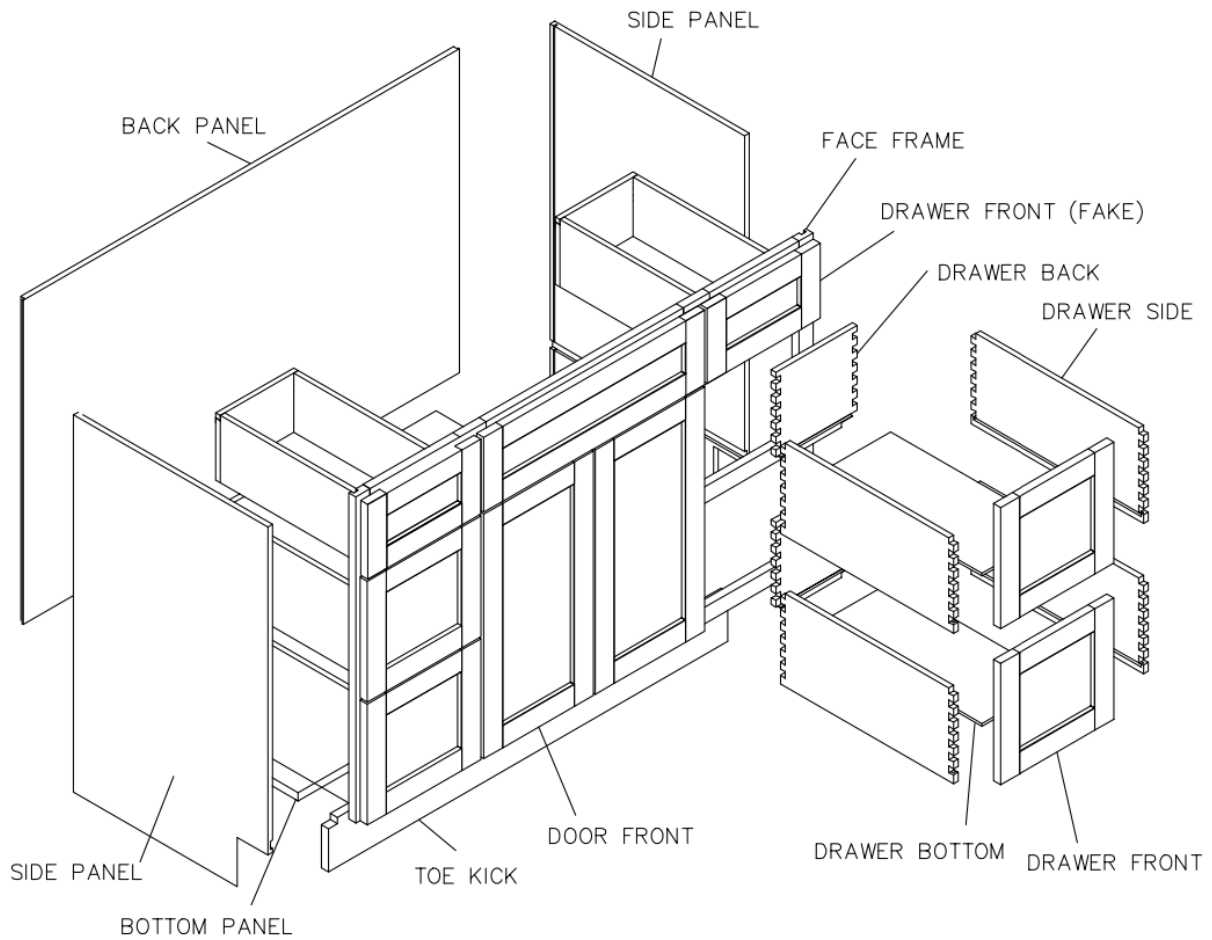
STEP 8



STEP 9



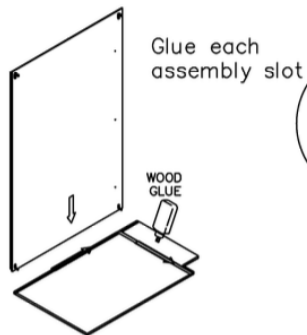
Assembly Instructions / Vanity Cabinet (6 Drawers)



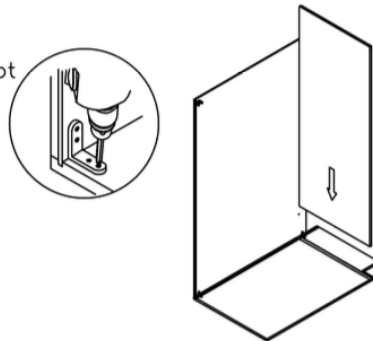
This instruction applies to the following items:
VAN48D-6, VAN60D-6

Assembly Instructions / Vanity Cabinet (6 Drawers)

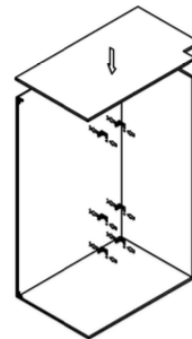
STEP 1



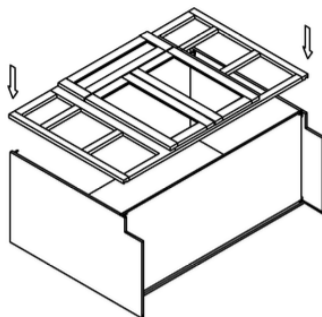
STEP 2



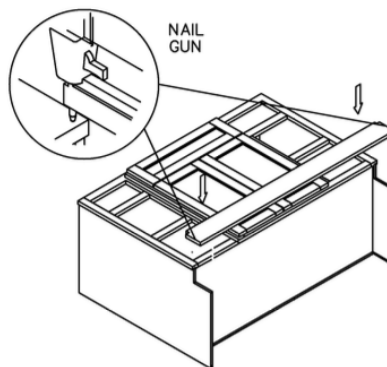
STEP 3



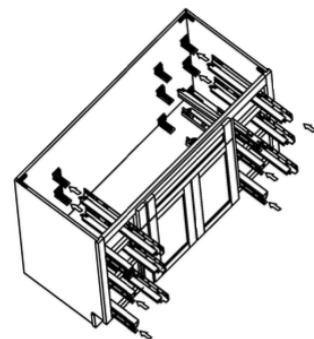
STEP 4



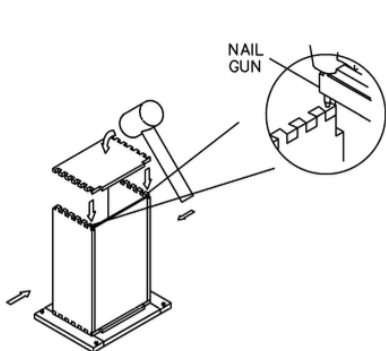
STEP 5



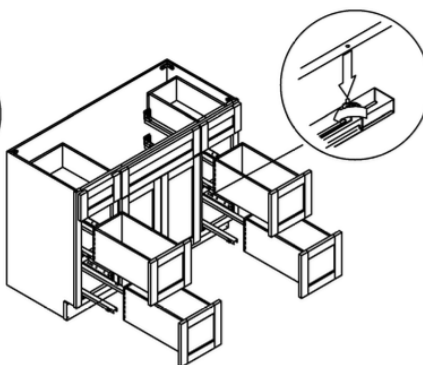
STEP 6



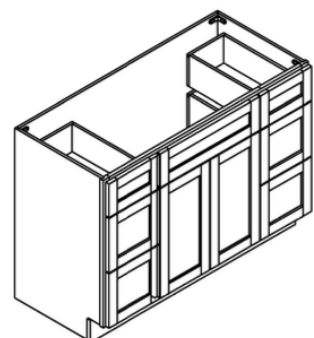
STEP 7



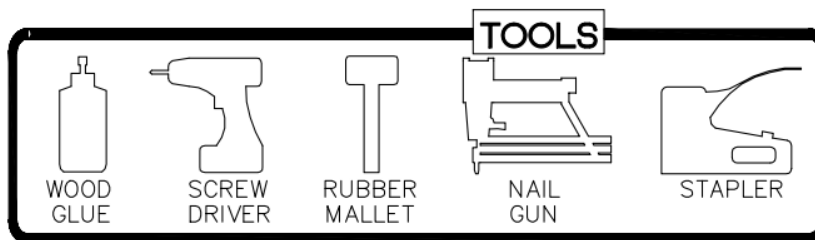
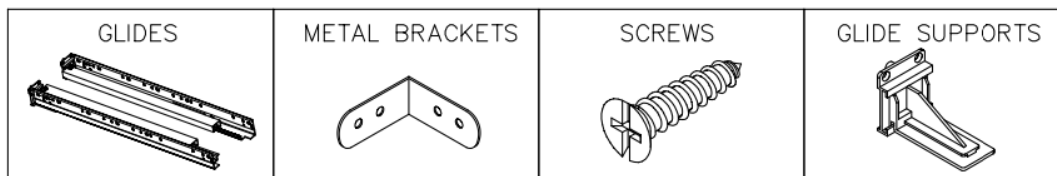
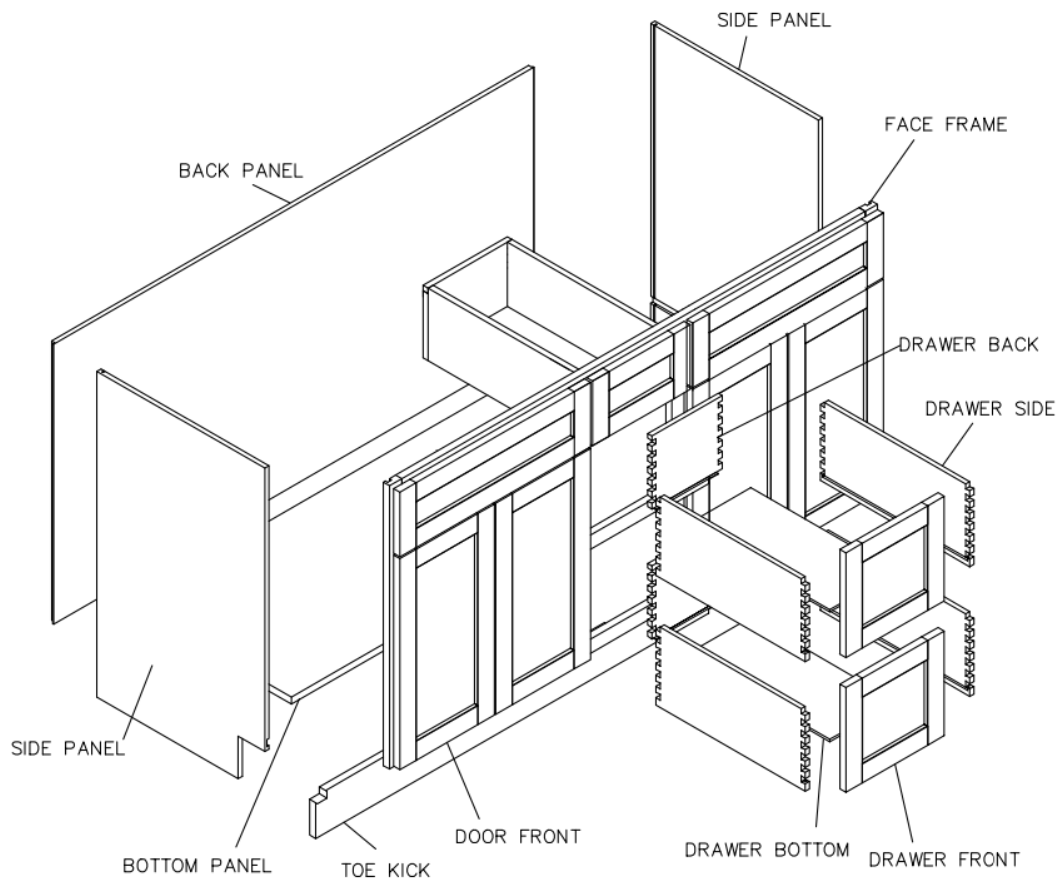
STEP 8



STEP 9



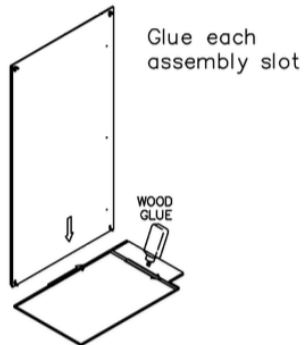
Assembly Instructions / Vanity Cabinet (3 Drawers)



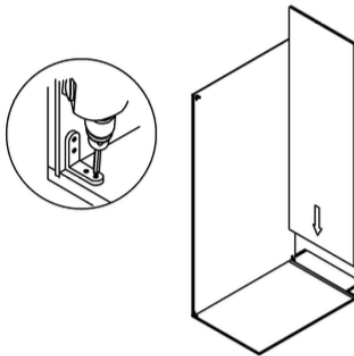
This instruction applies to the following items:
VAN60DD-3

Assembly Instructions / Vanity Cabinet (3 Drawers)

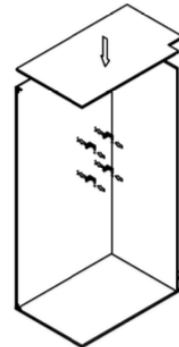
STEP 1



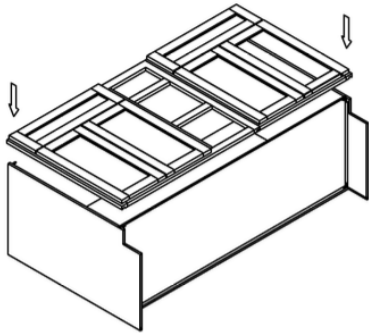
STEP 2



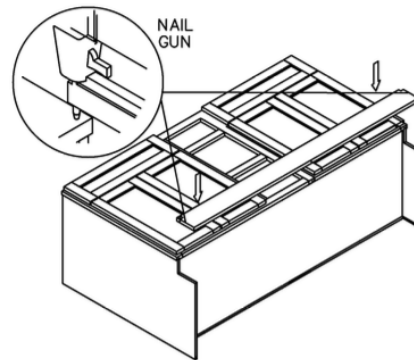
STEP 3



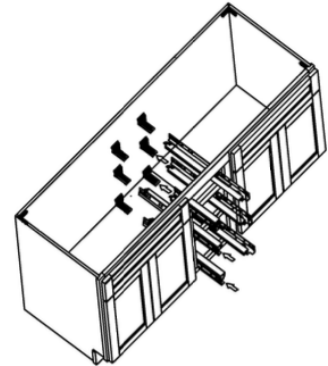
STEP 4



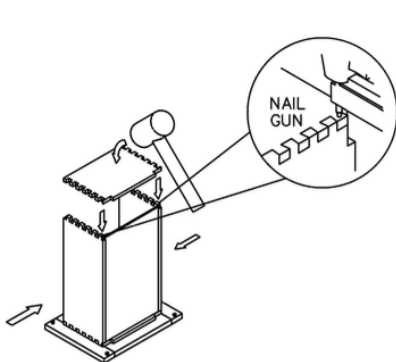
STEP 5



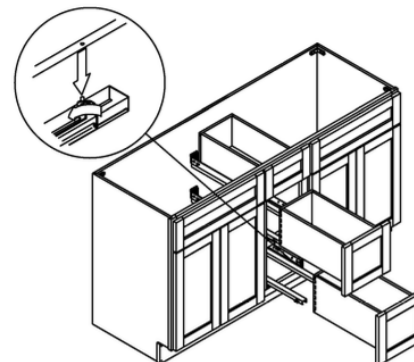
STEP 6



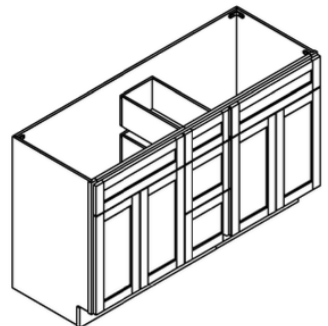
STEP 7



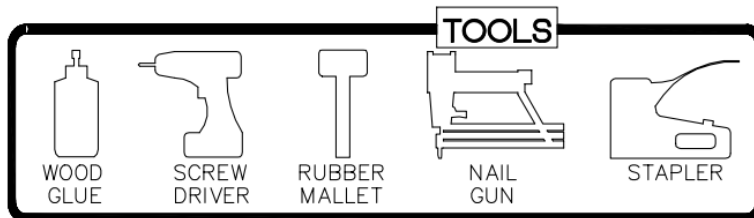
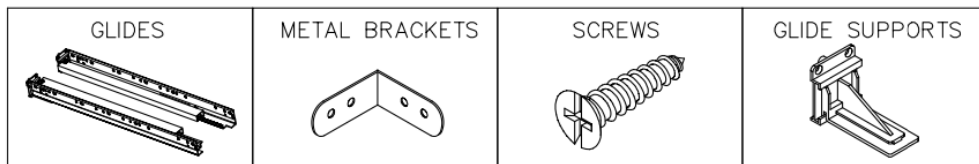
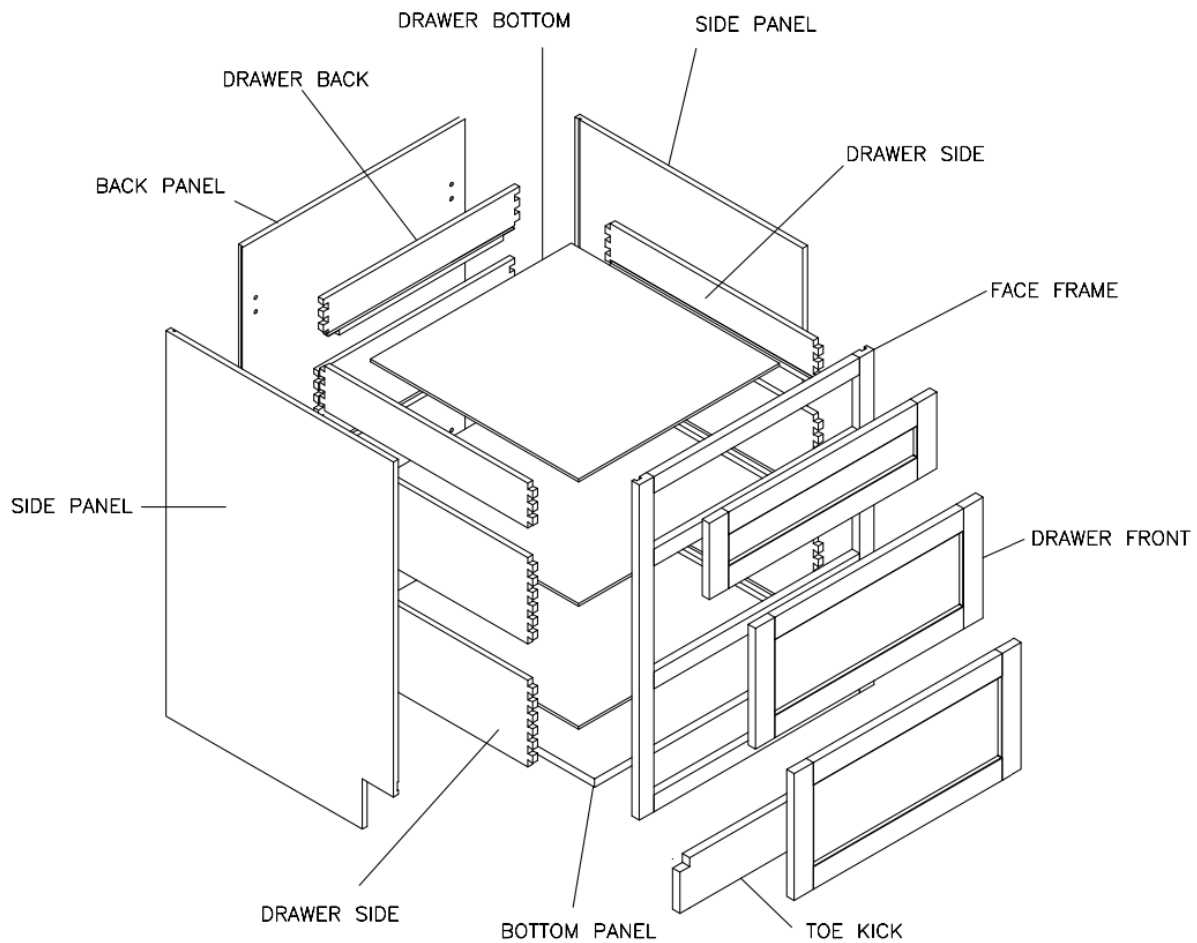
STEP 8



STEP 9



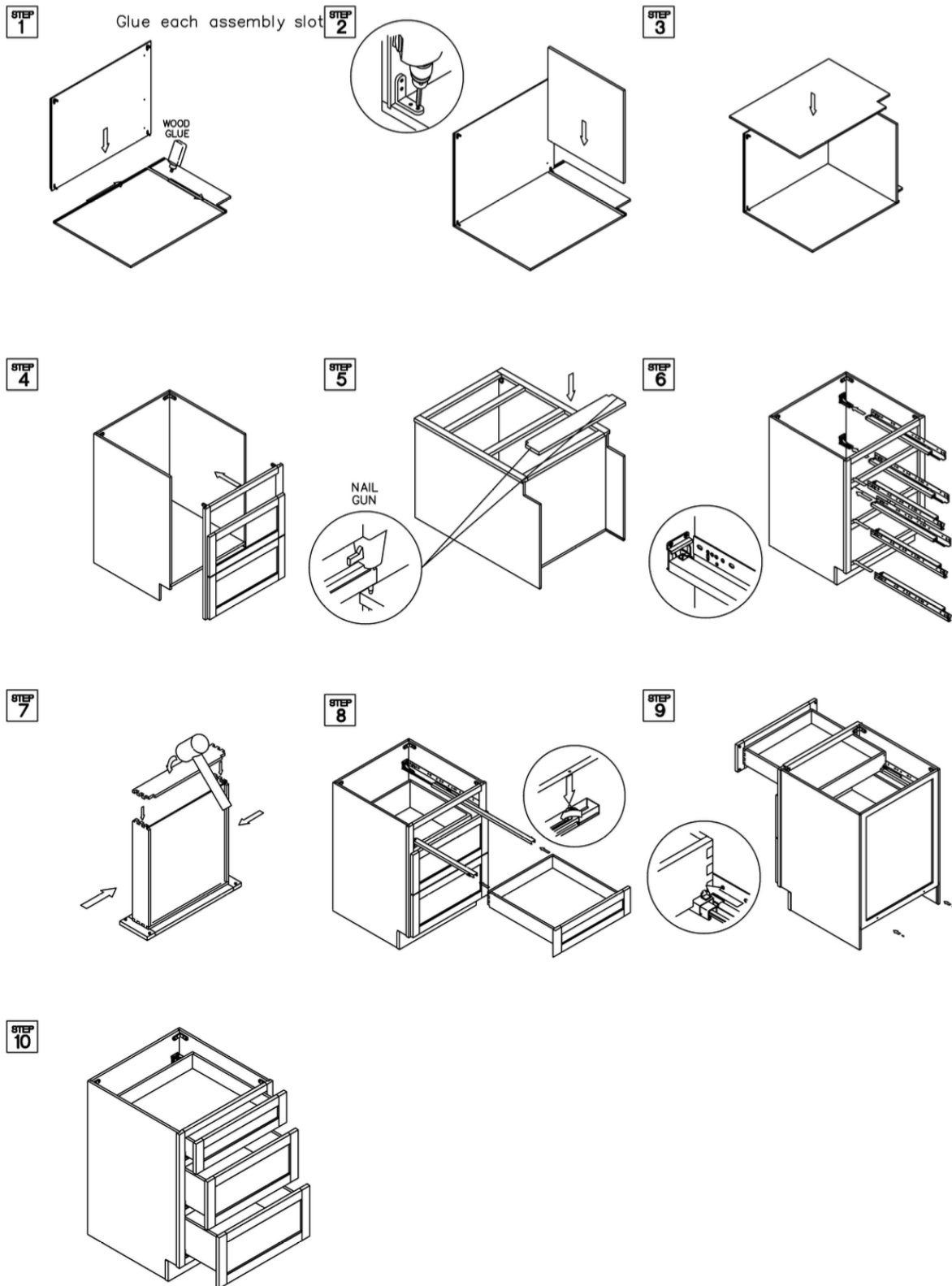
Assembly Instructions / Vanity Drawer Base Cabinet (3 Drawers)



This instruction applies to the following items:

VDB12、VDB15、VDB18、VDB24

Assembly Instructions / Vanity Drawer Base Cabinet (3 Drawers)





todo
CABINETRY.COM

www.todocabinetry.com
www.todocabinetrystore.com
info@todocabinetry.com
+1 (888) 416-8898